

■ **Kobra Formen GmbH, 08485 Lengsfeld/Saxony, Germany**

Custom-made Design – Individuality in Modern Mould Design

A designer's faithfulness to detail, individuality, exclusivity and practical functionality describe a development on the market that Kobra not only follows, but is also decisively helping to shape. Absolute customer orientation and technical competence are currently attesting to the manufac-

turer of special moulds for the concrete block industry excellent success and entirely new perspectives for its customers. To complete its product range, the company runs its own design department for all kinds of sophisticated concrete products.

The claim made by this mould manufacturer, who operates worldwide, is clearly formulated. Kobra wants to serve its customers not only with reliable standard products, but also with sophisticated and innovative special solutions. The focus is always on the customer and it is precisely the customer's needs that are to be met. "Everything is possible!" Always facing up to new challenges and never standing still are a philosophy and a long tradition of this medium-sized company.

Individual stone development with Kobra Design

As far as stone design is concerned, the company goes its own way and presents itself as an attentive partner on the creative platform Kobra Design [My Stone]. In accordance with the product strategy, before placing an order customers are faced with a large number of possibilities of implementing their ideas, which stone design picks up on and channels into an outstanding product. Except when there are technical restrictions, there are no fixed patterns or limitations whatever that hinder fulfilment of customers' wishes. Regarding concrete blocks, Kobra does everything in its might because customers

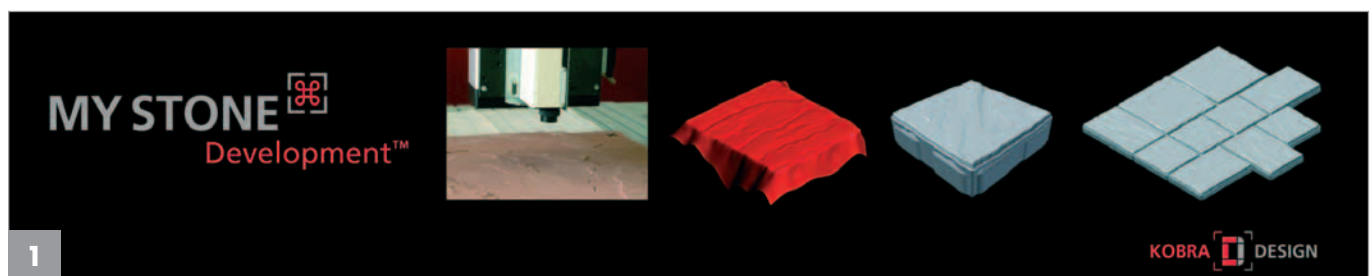
should be able to produce the stone they had been looking for.

At Kobra, the development of special surfaces and contours in complete stone systems or the realisation of special functions and characteristics in a combination of stones are part and parcel of its daily business. Beyond visual criteria, stones are above all designed according to practical aspects.

For several years, the company has been known on the market as a leading vendor of copies, true to the very last detail, of filigree surfaces and for the realisation of a highly diverse range of contours. It makes no difference whether nature was used as the source of inspiration or whether products have stemmed purely from someone's fantasy. No limits are posed on feasibility when it comes to the size of an area covered by designed structures. Originals measuring up to one square metre in each scan are digitised using the latest laser technology. The laser scans the respective heights of individual surface points in a defined grid. The individual points of the so-called point cloud are then linked up by lines in a network. To be able to imagine this process, think of a cloth that is placed exactly over the sur-

face. The result is a digital impression that reproduces the structure of the original to an extreme degree of precision. In an average-sized shale surface, there are more measured points than in a complete car bodywork. Kobra copes with the enormous volume of data by using the most up-to-date computing technology.

Kobra is able to produce larger areas out of the structure of small originals. Through painstaking detailed work, all visual "seams" disappear and the structure takes on a homogeneous overall appearance. In the design process, the designer creates diverse structures on the basis of an original, for example by boosting or reducing embossing depths. In a second process step, the surface is converted to the required stone size and is united to the block structure. Kobra particularly realises deep drawn structures on a stone not only by means of the tamper shoe, but also in conjunction with highly embossed mould walls. The design of the concrete block creates the prerequisites for the precise function of the Kobra mould. Every surface is exhaustively checked for possible undercuts. Thus, there must be no body edges standing in the way of the shuttering removal direction. The block practically has to taper as its height increases.

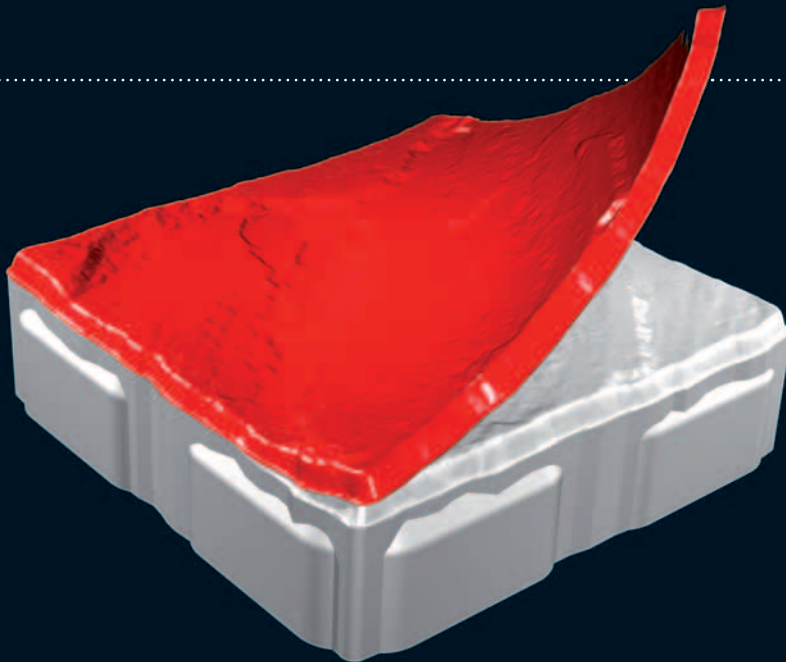


Kobra Formen GmbH advertises its creative stone design offerings with the statement "You imagine, we design – together for perfect results."

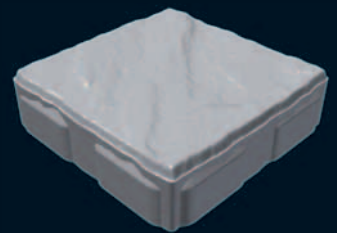


KOBRA

YOU IMAGINE – WE DESIGN.



MY STONE 
Development™
Prototyping™



VISION TO REALITY

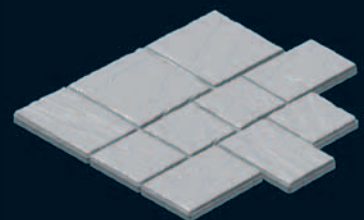
Don't let yourself get pre-moulded! **KOBRA DESIGN [MY STONE]** offers numerous opportunities of designing your own individual stone geometries. We do not just develop someone's stones – we develop yours!

YOUR ADVANTAGES:

- Reproducible prototypes of filigree natural models.
- Development of functional imaginary products.
- Special interlocking characteristics and functions.
- Detailed and exact plastic or concrete prototypes.

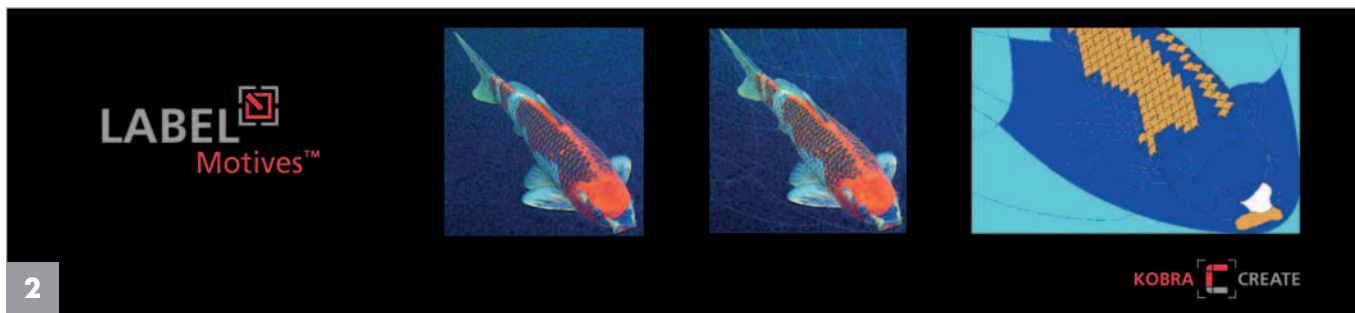
Detailed information can be obtained from our sales team.

www.kobragroup.com | info@kobragroup.com



KOBRA FORMEN GMBH
Plohnbachstraße 1
08485 Lengenfeld/Gemany
Fon +49 [3 76 06] 3 02-0
Fax +49 [3 76 06] 3 02-22

KOBRA  DESIGN



Individual motives for exclusive customer wishes

If requested, Kobra equips concrete blocks with diverse functions and characteristics. As a matter of course all international standards are fulfilled.

Similar to a jigsaw puzzle, paver laying becomes immovable by horizontal interlocking. On areas subject to high traffic volume or large amounts of heavy goods traffic, drifting apart of the laid stones is largely prevented. Vertical combination systems enable better distribution of high isolated loads, thus preventing subsidence of individual stones. Especially in areas relevant to security, vertical removal of individual parts of the system can be suppressed. Area sealing is under increasing criticism. By contrast, the drainage paving from Kobra is ecologically valuable. Especially when the stones facilitate area drainage through pockets in the lower stone walls, the advantages of functioning paving products are clearly apparent. Kobra owns the patent for the entire »Hydrovario™« principle, from the concrete block through to the mould design. The prerequisites for optimum handling in the concrete plant, during transport and construction are created as early as in the design phase. Already at this early stage of product creation, the pallet layout will be optimised for easy cubing and palletising. Further practical characteristics of concrete blocks such as their suitability for packaging or machine laying are realised in conformity with customers' wishes.

Therefore, the finished stone is the perfect and reproducible imitation of a natural original or the reproduction of an idea, only far better.

My Stone »Development™« does not supply any products off the peg, but customised systems and individual solutions. As a result, customers get three-dimensional drawings of their stones and of their

laying patterns for release or clarification of further details (fig. 1). With My Stone »Prototyping™« customers can also receive models, true to scale and detail, of a concrete stone as a positive made out of plastics or concrete. Customers can quite rightly call their stone developments "My Stone".

In addition to this individual product range, customers find in Kobra Design [Basic] an extensive range of basic stones with defined standard bodies that can also be adjusted to their wishes.

Exclusive design solutions with Kobra Create

Kobra Create faces up to entirely new challenges with the two new product brands Create [Label] and [Place]. The company's full creative potential and competence are incorporated into these brands. Concrete stones can imitate any motive and any original that is suitable for digitisation. For private or commercial use, Kobra supplies exclusive one-off pieces or series moulds from the idea to the finished concrete product from one source. With Label »Logos™« and »Motives™«, the mould manufacturer is once again focussing on its customers. Mind you, tightly calculated production targets count less than enthusiasm for the diversity of design and technical possibilities and the individual projects of individual customers for the design of wall and floor surfaces both indoors and outdoors. Kobra is a suitable partner when it comes to skilfully displaying a company logo in conformity with a corporate design strategy either just once or repeatedly. Also in the private sphere, there are entirely new possibilities of presenting a hobby or an image. Motives such as a favourite fish in a garden pond or the loveliest plant in your own collec-

tion can be split into segments and, in terms of its colour and shape, can be imitated down to the very last detail in all grades of concrete (fig. 2).

Create [Place] opens up new possibilities of use and applications for concrete blocks. For example, pictograms or symbols for marking public areas are only one option for practical and expedient orientation.

Increasing importance is being attached to creative stone design. Models from nature are imitated and, as a new product, are lent a functional and practically oriented design. Kobra possess excellent know-how in the field of creative stone design. Its offering ranges from the individual one-off item to production-optimised high-volume models for indoors and outdoors. With not inconsiderable effort, everything is possible in modern mould design. To be able to create this exclusivity and exactness, the mould design firm invests in the most up-to-date hardware and software and relies on its qualified employees, who are always informed about current product and market developments. Therefore, according to the motto of "vision to reality", Kobra Formen GmbH intends to create competitive advantages for its customers in future also.

Further information:



KOBRA Formen GmbH
 Plohnbachstraße 1
 08485 Lengsfeld/Saxony, GERMANY
 T +49 37606 3020 · F +49 37606 30222
 info@kobragroup.com · www.kobragroup.com