

Progress Maschinen & Automation AG, 39042 Brixen, Italy

Efficiency through digitalization and automation at DS Elcobyg

DS Elcobyg, a key player in the precast concrete industry in Scandinavia, has taken a significant step in modernizing its operations by implementing the ERPbos software solution. The previous system could no longer be updated; therefore, the company needed a more advanced, adaptable system to support its growing demands. Moreover, the company invested in automated reinforcement machinery to increase efficiency in production.

DS Elcobyg is a complete supplier of concrete solutions, designing, manufacturing, and delivering for all types of construction in Denmark. With over 180 employees, the company operates from its headquarters in Hobro and has further production facilities in Genner, Southern Jutland. As part of DS Gruppen, owned by the German construction group Goldbeck, DS Elcobyg provides a wide range of construction elements, including facade panels, load-bearing structures, and customized concrete solutions. The company emphasizes lean production and sustainability, aligning with increasing industry demands for environmentally responsible construction practices.



The ERPbos software enables a more efficient and consistent planning and controlling of business processes at DS Elcobyg.



The M-System Blue-Mesh® mesh welding plant produces bespoke mesh from coil according to individual specifications.

Key benefits of ERPbos implementation

Since adopting ERPbos, DS Elcobyg has experienced several advantages, including:

- **Enhanced visual overview**
"We now have a much clearer view of our production planning, which allows us to react more quickly to changes," says Carsten Sørensen Kronborg, production manager at DS Elcobyg.
- **Greater employee engagement**
More employees can access real-time data, reducing inefficiencies and improving coordination.
- **Optimized sales & logistics**
Order entry, production planning, load scheduling, and invoicing are now integrated into a single system, reducing errors and manual work.
- **Future scalability**
Currently used by 20 employees, the company expects to expand usage to 50 as operations grow.

Integration with other systems

ERPbos is now seamlessly connected with multiple systems DS Elcobyg relies on, including Branel, Bluebeam, IPW, F-Link and NAV. These integrations ensure smooth data exchange and operational consistency across departments.

Investment in Automation & Machinery

DS Elcobyg also invested in reinforcement automation with Progress Group machinery, including the M-System Blue-



PROGRESS GROUP

Your digitalization partner in the precast and rebar industry

Software solutions for:

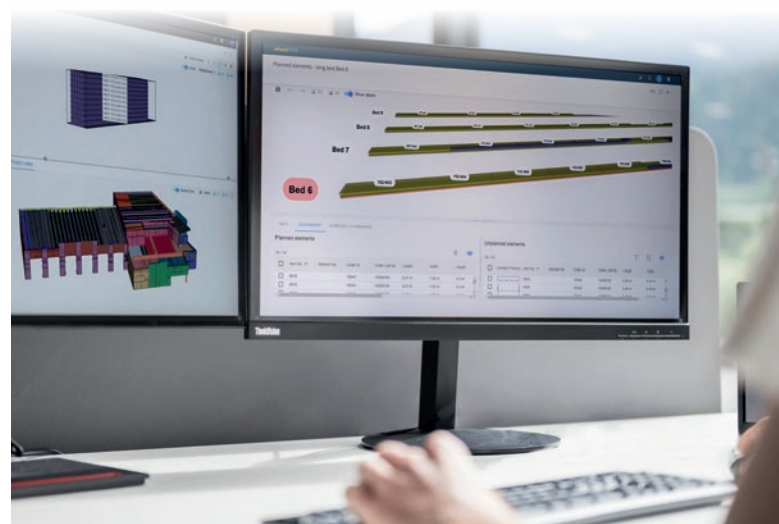
- Increased efficiency in design
- Full transparency in planning
- Ensured quality in production

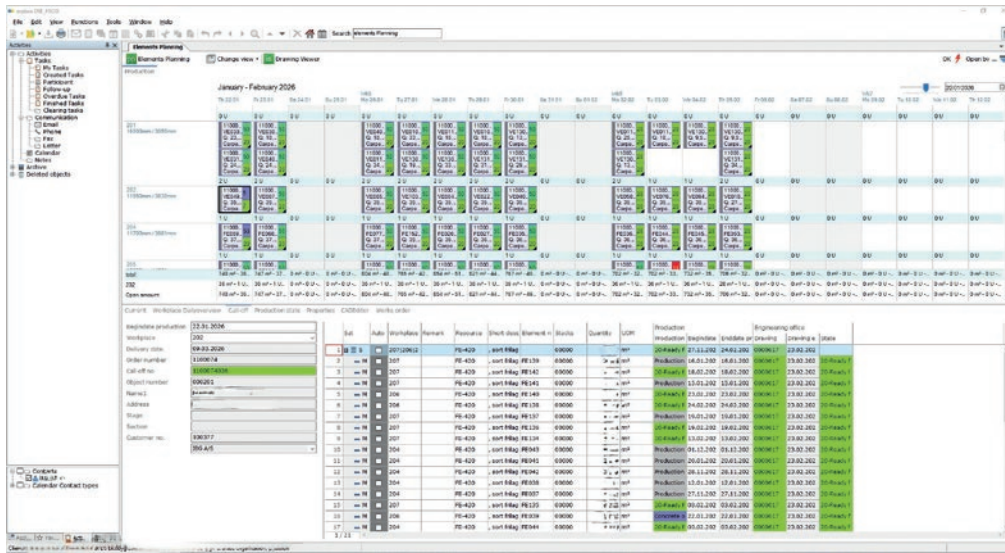


The MSR 20 straightening, cutting and bending machine is designed for the production of tailor made reinforcement bars.

Unlock the full potential with our industry-specific CAD, ERP and MES solutions.

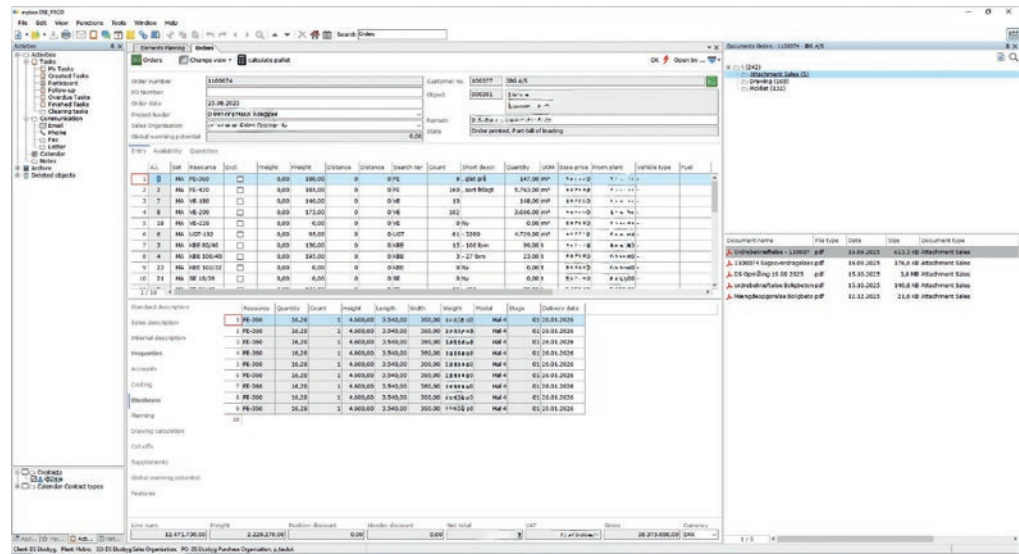
www.progress-psd.com





Efficient elements planning for the stationary production.

Quick order creation in ERP/pos and clear overview.



Mesh® mesh welding plant and an MSR 20 straightening, cutting and bending machine. After researching market options, the decision for Progress machines was the best fit for their production needs.

Benefits of the automated reinforcement machinery

- **Customized production**
"The machinery is ideal for an element factory like ours, where products vary significantly," explains Carsten Sørensen Kronborg.
- **Reduced waste**
The materials are now tailored directly to each element, meaning that there is significantly less waste.
- **Increased efficiency**
Automating key processes has sped up production and improved overall consistency.

- **EPD (Environmental Product Declarations)**
Supporting sustainability initiatives.
- **Inventory management**
Better material tracking will help to reduce stock shortages and optimize production.
- **Time registration**
Enhancing productivity monitoring.
- **Paperless production**
"In the long run, we aim to eliminate physical drawings altogether," states Carsten Sørensen Kronborg.

Successful cooperation with Progress Group

The decision to partner with Progress Group was based on extensive market research. "We chose Progress because they operate their own precast factory and build machines specifically for our industry," Carsten Sørensen Kronborg explains. "They truly understand our needs."

Future development & digitalization goals

Looking ahead, DS Elcobyg plans to expand its digital transformation by incorporating:

With Progress Group software and reinforcement machinery, DS Elcobyg has taken a significant step towards greater efficiency.



Mr. Sørensen Kronborg, production manager and Mr. Kasamovic, Foreman at DS Elcobyg.

ciency, less waste and future scalability. While there were initial challenges in implementation, the benefits of the digital transformation are already proving invaluable. As the company continues to expand its use of automation and software, DS Elcobyg is well-positioned for long-term success in an increasingly competitive industry. ■



PROGRESS GROUP sponsored the free download possibility of the pdf of this article for all readers of CPI. Please check the website www.cpi-worldwide.com/channels/progress-group or scan the QR code with your smartphone to get direct access to this website.



FURTHER INFORMATION

PROGRESS GROUP

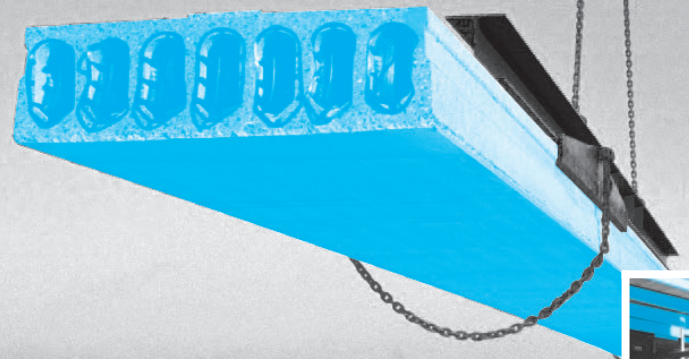
Progress Maschinen & Automation AG
Julius-Durst-Straße 100, 39042 Brixen, Italy
info@progress-m.com, www.progress-m.com

Progress Software Development GmbH
Julius-Durst-Straße 100, 39042 Brixen, Italy
info@progress-psd.com, www.progress-psd.com

DS ELCOBYG

DS Elcobyg A/S
Hadsundvej 8, 9500 Hobro, Denmark
T +45 96 572657
ds@ds-elcobyg.dk, www.ds-elcobyg.dk

Pure flexibility.



Production of hollow core slabs

PAUL supplies

- Prestressing installations incl. planning work
- Anchor grips
- Prestressing machinery (single-/multi-stressing jacks)
- Strand pushing and cutting equipment
- Automatic prestressing machines for railway sleepers
- Prestressing equipment for bridge construction (prestressing cables and stay cables)

The experts in Prestressed Concrete Technology.
stressing.paul.eu

Paul at YouTube



stressing-channel.paul.eu

Max-Paul-Str. 1
88525 Dürmentingen
Germany
☎ +49 (0) 73 71/500-0
☎ +49 (0) 73 71/500-111
✉ stressing@paul.eu

