

Progress Software Development GmbH, 39042 Brixen, Italy

Preco invests in digitalization to optimize the production process

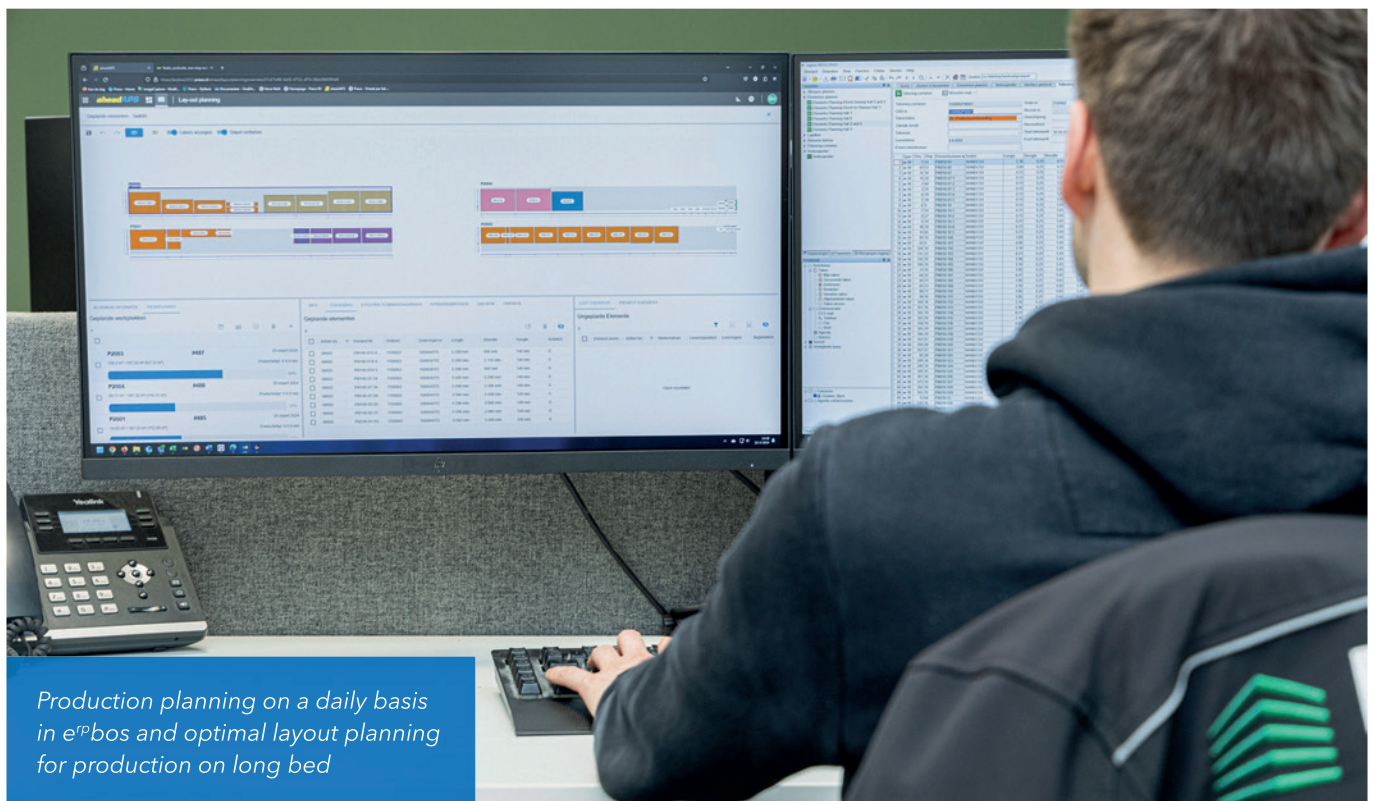
Preco B.V., a leading manufacturer of precast concrete products based in Apeldoorn, the Netherlands, has partnered with Progress Software Development, a Progress Group company, to implement e^Pbos, an industry-specific ERP system versatile enough to perfectly meet the company's needs. The goal of the transformation is to revolutionize Preco's operations and optimize the entire process chain.

Modernizing for the future

Preco, known for their high-quality precast concrete products, specializes in manufacturing walls, hollow core elements, and custom elements such as stairs and columns. The company's journey began in 2004 under the name Cervix Beton, initially focusing on producing concrete elements for the agricultural sector. Over time, Preco experienced significant growth, leading to a relocation to Ede in 2012 and ultimately settling in a state-of-the-art concrete factory at the Ecofactorij in Apeldoorn in 2019.

One single complete software solution

Before implementing e^Pbos, Preco relied on various stand-alone software solutions that could not map every process and required a certain amount of manual effort with Excel spreadsheets to create accurate production planning. Therefore, they decided to implement the new software to replace both their different solutions, to switch to a single complete, integrated solution to control the whole business process. "Simply put, we searched for an ERP system that fully met our requirements. And that turned out to be e^Pbos", says Bjorn Houwen, Productionplanner at Preco. Progress customized this software for Preco by integrating intuitive 3D layout planning and a mobile application to provide a transparent overview of the production planning and warehouse situation, as well as the ability to provide real-time production feedback and log warehouse activity from anywhere, at any time. It now allows Preco to fully map and optimize production for all products in one system, eliminating the need for Excel-based manual workflows and prevent flaws. This enables better con-



Production planning on a daily basis in e^Pbos and optimal layout planning for production on long bed

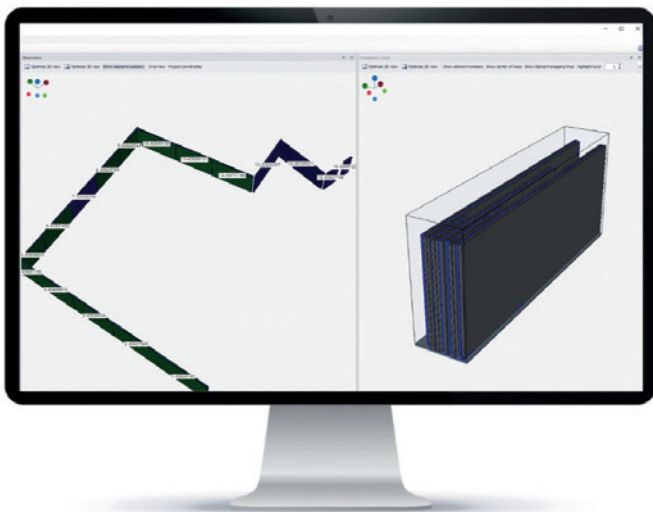


Preco's long bed production

Control over resources and optimize the production on tilting tables, long beds, and several manual workplaces for custom elements.

Seamless integration

The collaboration between Preco and Progress Group, brings a range of improvements to Preco's operations in an efficient, modern and intuitive way. e²Pbos ensures seamless integration across departments, optimizes resource management, and enables the incorporation of BIM-based processes. The ERP-system interfaces with their finance system, CAD software and invoice tool, and controls the plotter and laser system in production. This integration ensures a cohesive flow of information and data between these interconnected systems, enhancing efficiency and accuracy throughout Preco's operations. The successful partnership between Preco and Progress Group is poised to revolutionize Preco's operations, enhancing their competitiveness and driving further success in the precast concrete manufacturing industry.



Stackplanning for each level of the building for optimal delivery



PROGRESS GROUP

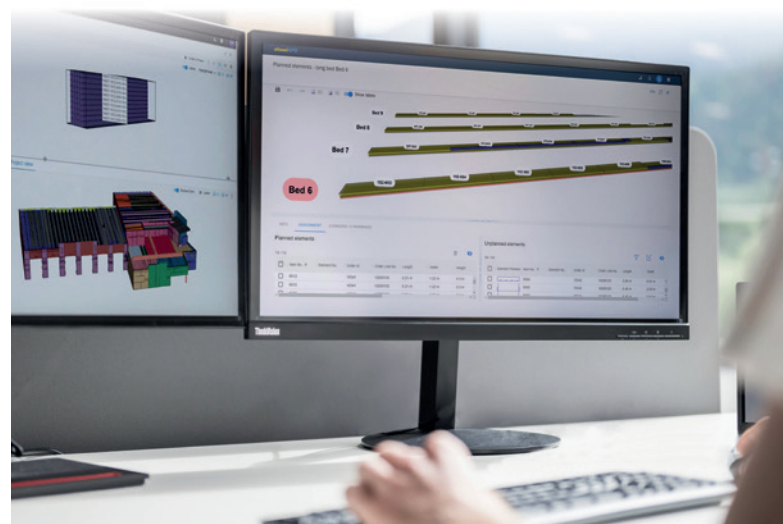
Your digitalization partner in the precast and rebar industry

Software solutions for:

- Increased efficiency in design
- Full transparency in planning
- Ensured quality in production

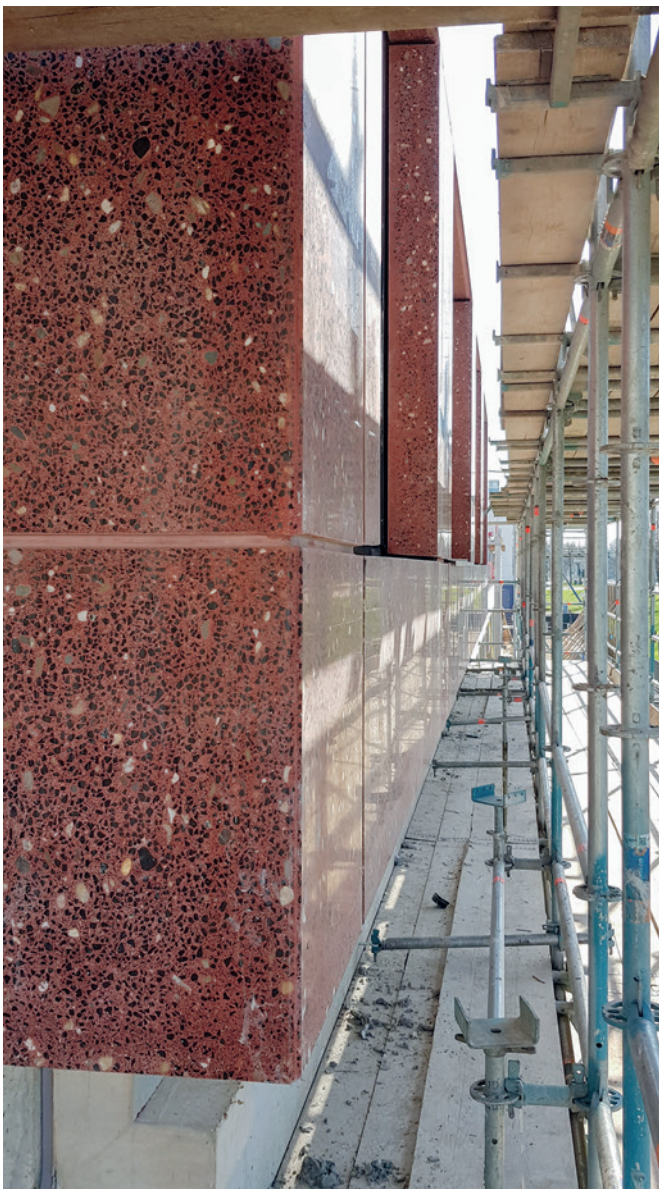
Unlock the full potential with our industry-specific CAD, ERP and MES solutions.

www.progress-psd.com





The whole delivery process is planned in e^{PRO}bos, Progress Group's ERP-system.



Facade elements by Preco at the construction of the hotel "The bridge" in Amsterdam.

Why Progress

"There is a quick and open communication, both with the project manager as well as with the helpdesk on Progress' side. New features have been developed together, unexpected challenges have been tackled within days or even hours. There is a real effort from both sides to make sure that the factory specific needs are covered in a sensible way, without straying too far from the standard.", says Tim Grooteman, ERP Consultant at Preco.

The biggest advantage is that Progress uses PXML files for data import. These files are multifunctional and they can use them for:

- Data import into e^{PRO}bos
- Ordering reinforcement
- Controlling the insulation cutter

In conclusion, the implementation of e^{PRO}bos marks a significant milestone for Preco, as they leverage the expertise of Progress Group to enhance their business processes. By replacing their previous software solutions, Preco gains a comprehensive and tailored ERP system that integrates their production planning and resource management, streamlining operations and providing a competitive edge in the precast concrete manufacturing industry. ■



PROGRESS GROUP sponsored the free download possibility of the pdf of this article for all readers of CPI. Please check the website www.cpi-worldwide.com/channels/progress-group or scan the QR code with your smartphone to get direct access to this website.



FURTHER INFORMATION



Preco BV
 IJsseldijk 31
 7325 WZ Apeldoorn, The Netherlands
info@preco.nl
www.preco.nl

PROGRESS GROUP

Progress Software Development GmbH
 Julius-Durst-Strasse 100
 39042 Brixen, Italy
 T +39 0472 979159
info@progress-psd.com
www.progress-psd.com