

Progress Maschinen & Automation AG, 39042 Brixen, Italy

# Building with a future: Max Bögl Group relies on automated reinforcement production

The construction industry is changing. The shortage of skilled labour and the demand for sustainable construction methods are presenting companies like Max Bögl with new challenges. With the Progress Group at its side as a partner, Max Bögl is focussing on innovative solutions for automated reinforcement production and is thus equipping itself for the future.

## Automation increases efficiency and quality

The Progress Group offers pioneering technologies that help construction companies such as Max Bögl to increase their

efficiency and fulfil high quality standards at the same time. Highly automated machines are the key to success in the modern construction industry.

## Innovative solutions for reinforcement production

The manual processing of reinforcement is time-consuming and labour-intensive. The M-System mesh welding plant from Progress Group with beam benders and individual bending heads as an integrated mesh bending system enables considerable time and labour savings in reinforcement production and ensures more efficient production of bent reinforce-



*The precast concrete elements can now be produced even more efficiently with automated reinforcement.*





Complete reinforcement cages for tunnel segments can be produced fully automatically with the machines from the Progress Group.

ment elements. The Max Bögl Group already has five of these plants in operation at various locations.

#### Modernisation as a driver for the future

Max Bögl is continuously investing in the modernisation of its reinforcement production. The Wire Center, which straightens, cuts and lays reinforcing wires fully automatically from the coil, was installed in one of the Group's large precast plants. The Versa lattice girder welding machine increases efficiency in the production of lattice girders thanks to the automatic height change during production. The Form Master shuttering and deshuttering robot ensures a fully automated shuttering process in the factory.



The M-System mesh welding plant guarantees the automated production of reinforcement meshes and cages.

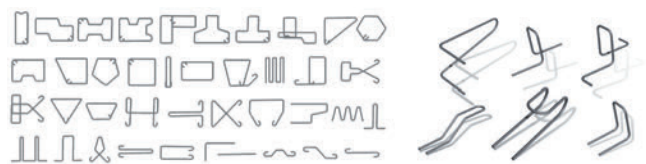


## PROGRESS GROUP

### Stirrup benders with robot

- Fully automated
- Powerful
- Energy efficient

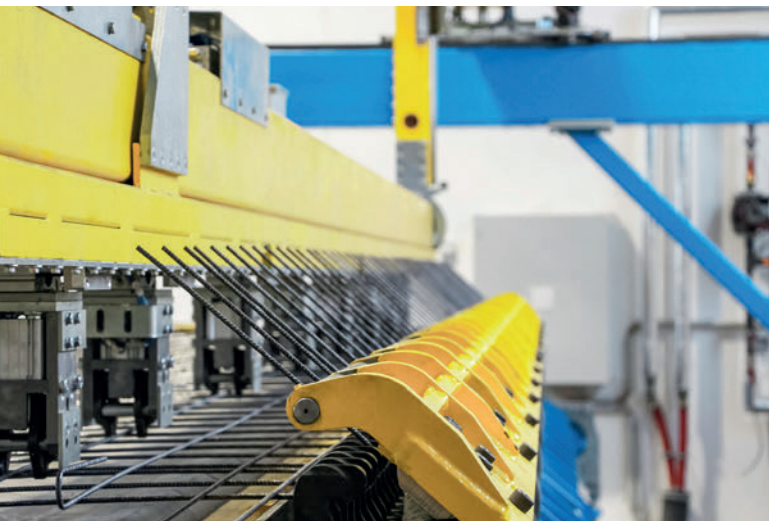
The EBA series with robot offers numerous innovations, such as automatic matrix changing, automatic labeling and a logistics solution with automatic transport of the stirrups.



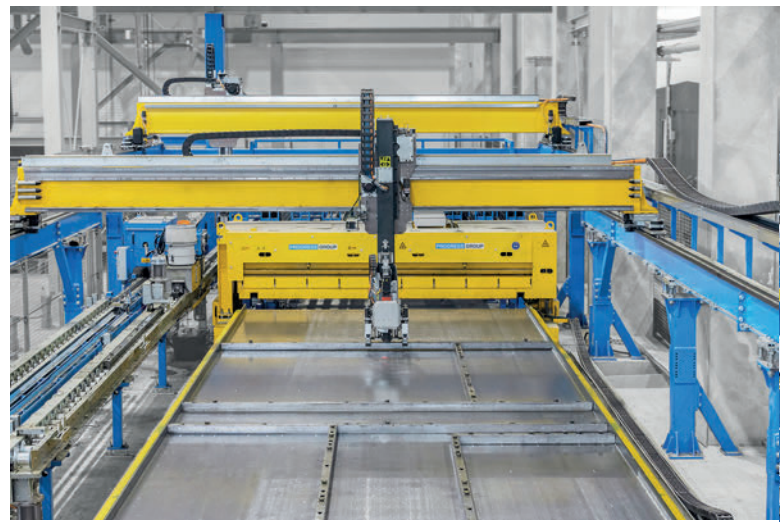
[www.progress-m.com](http://www.progress-m.com)







The fully integrated beam bender facilitates the processing of the flexibly produced reinforcement meshes.



The Form Master shuttering and deshuttering robot carries out all work steps of the shuttering process fully automatically.

### Special machines for large-scale projects

Max Bögl also benefits from the Progress Group's expertise in major European tunnel projects. Innovative systems and manufacturing processes enable the automatic production of reinforcement meshes, ladders and complete reinforcement cages that are precisely tailored to the requirements of the respective project.

The co-operation between Max Bögl and Progress Group is a prime example of successful teamwork and future-oriented thinking. With state-of-the-art reinforcement technology and a high degree of automation, Max Bögl is ideally equipped to master the challenges of the future.

Further advantages of automated reinforcement production with Progress Group:

- Improved occupational safety through the reduction of manual activities
- Higher precision and consistent quality of the reinforcement
- Lower material costs thanks to optimised material utilisation
- Sustainable construction through resource-saving production



The Versa lattice girder welding machine enables flexible just-in-time production of lattice girders from coil with automatic height change.



PROGRESS GROUP sponsored the free download possibility of the pdf of this article for all readers of CPI. Please check the website [www.cpi-worldwide.com/channels/progress-group](http://www.cpi-worldwide.com/channels/progress-group) or scan the QR code with your smartphone to get direct access to this website.



### FURTHER INFORMATION



**MAX BÖGL**

Fortschritt baut man aus Ideen.

Max Bögl Fertigteilwerke GmbH & Co. KG  
 Max-Bögl-Straße 1, 92369 Sengenthal, Germany  
[info@max-boegl.de](mailto:info@max-boegl.de), [www.max-boegl.de](http://www.max-boegl.de)

**PROGRESS GROUP**

Progress Maschinen & Automation AG  
 Julius-Durst-Straße 100, 39042 Brixen, Italy  
 T + 39 0472 979100  
[info@progress-m.com](mailto:info@progress-m.com), [www.progress-m.com](http://www.progress-m.com)