

progress Maschinen & Automation AG, 39042 Brixen, Italy

# Romey expands plant in Plaidt, focusing on flexibility and automation



Started in 1950 as a producer of masonry blocks and hollow core slabs with 10 employees in Plaidt, Romey Baustoffwerke GmbH is a well-known industry player in 2021 with around 240 employees in two production facilities and nine sales offices and continues to invest in the future. The company decided to invest repeatedly in innovative automated reinforcement plants from progress Maschinen & Automation, a Progress Group company, within a few years. This will increase the degree of automation of production at the Plaidt plant with a total of three carousel plants. The first two carousel plants were extended in quick succession with MSR cross-wire straightening and cutting machines and then VGA Versa lattice girder welding machines. A Wire Center will be added to the third carousel plant in 2021.



Romey Baustoffwerke headquarters in Plaidt, where it all began over 70 years ago.



The new fully automatic VGA Versa lattice girder welding machines can switch automatically between girder heights in a very short time and during ongoing production.

### Flexible, automated reinforcement plants

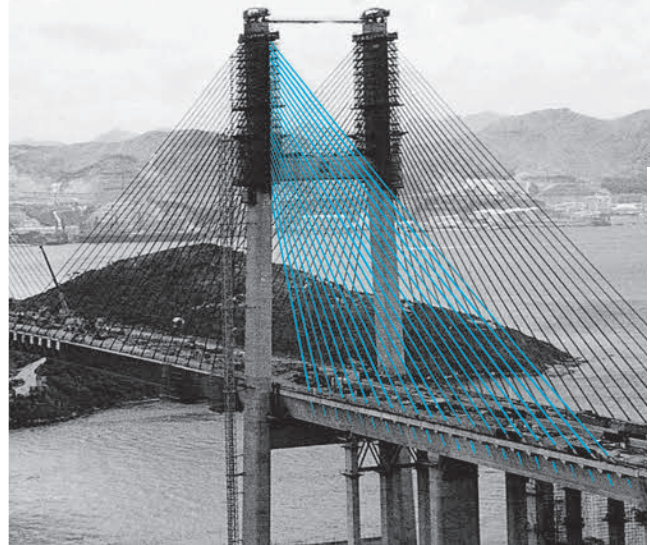
Within a short period of time, the traditional company invested in two MSR straightening and cutting machines and two VGA Versa lattice girder welding machines. The first machine was purchased in 2018. A MSR Multirotor straightening and cutting machine with automatic spacer supply and automatic wire diameter changer. It works directly from the coil and was able to convince Romey to purchase a second of its kind shortly afterwards. In addition to the straightening and cutting machines, two 6-fold EPT laying grabs were installed, each of which takes 6 bar spacers from the supply magazine and lays them on the pallet fully automatically according to CAD-CAM specifications. The new machines for producing the required reinforcement for the precast slabs were flexibly adapted to Romey's individual needs.

Flexibility was also the be-all and end-all for the lattice girder welding machines VGA Versa, which were additionally encased in a sound insulating cabin. Romey attaches great importance to pallet utilisation, which also means that the pallets sometimes have three to four different lattice girder heights. Here it is crucial that the girder height can be changed quickly, automatically and during ongoing production. The VGA Versa is a very good choice for these requirements, as it manages the height change fully automatically in a few seconds and can simultaneously weld the 5 wires of a lattice girder together continuously by means of resistance spot welding. This results in higher productivity and fulfils the objective for the new investment in the plant. Due to the positive experience gained, a second machine was



*The MSR Multirotor straightening and cutting machine from Progress has an automatic wire diameter changer and is also equipped with an automatic spacer supply.*

# A matter of confidence.



## Stressing of stay cables

### PAUL supplies

- Prestressing installations incl. planning work
- Anchor grips
- Prestressing machinery (single-/multi-stressing jacks)
- Strand pushing and cutting equipment
- Automatic prestressing machines for railway sleepers
- Prestressing equipment for bridge construction (prestressing cables and stay cables)

The experts in  
Prestressed Concrete Technology.  
[stressing.paul.eu](http://stressing.paul.eu)

Paul at YouTube



[stressing-channel.paul.eu](http://stressing-channel.paul.eu)

Max-Paul-Str. 1  
88525 Dürmentingen  
Germany  
☎ +49 (0) 73 71/500-0  
☎ +49 (0) 73 71/500-111  
✉ [stressing@paul.eu](mailto:stressing@paul.eu)





*The 6-fold EPT laying grab works fully automatically according to CAD-CAM specifications.*



*Precast concrete walls and slabs are reinforced with the manufactured lattice girders.*

purchased after only a short time. In autumn 2021, a Wire Center for double wall production will be installed for additional reinforcement automation. The Wire Center lays the reinforcement according to CAD specifications, which results in an optimised process that increases production output and dimensional accuracy.

### Precast concrete elements for smaller objects

The fully automated precast concrete element carousel plants primarily produce precast floor slabs for smaller projects. This means that Romey mainly supplies detached house and apartment block projects in Germany and Luxembourg, occasionally also in France. With its total of three pallet circulation systems, the plant produces up to approx. 5,000 m<sup>2</sup> of floor slabs and up to 1,000 m<sup>2</sup> of double wall elements daily. The tight cycle times can also be met thanks to the new reinforcement plants.

Managing Director Reinhard Vogt comments: "We were afraid that the new plants would not be able to keep up with about 8 pallets per hour, but they manage that without failure. We haven't lost a day due to technical problems in over a year!"

### Flexible service

Keeping the production interruption caused by assembly to a minimum was an absolute must for Vogt. Progress supplied large assemblies and already tests or assembles small-scale electronics in its own plant. Therefore, a lot of time can be saved during assembly - because any loss of production cannot be made up and is not sustainable for producers.

"Progress does not shy away from challenges such as more complicated installation situations of the machines, or installation during production - as it was the case with us with the MSR," explains Vogt, adding: "We started work earlier and Progress started assembly later and assembled half the night. It was also similar when installing the VGA Versas. You don't get that level of commitment from all companies."

### Progress through trust and quality

The managing director emphasises that such an investment is not only about good machines, but that you always do business with people. This requires a relationship of mutual trust, which absolutely exists with his contacts at Progress. Vogt says: "In addition to the existing trust, the in-house pro-



The produced double walls and precast slabs with in-situ topping ready for delivery to the customers.

gramming and service departments are an irreplaceable advantage. If something didn't work, no matter what it was, it only took a few hours and everything was fixed again. These points ultimately influenced the additional purchase decision - also for the Wire Center in 2021." ■



PROGRESS GROUP sponsored the free download possibility of the pdf of this article for all readers of CPI. Please check the website [www.cpi-worldwide.com/channels/progress-group](http://www.cpi-worldwide.com/channels/progress-group) or scan the QR code with your smartphone to get direct access to this website.



FURTHER INFORMATION

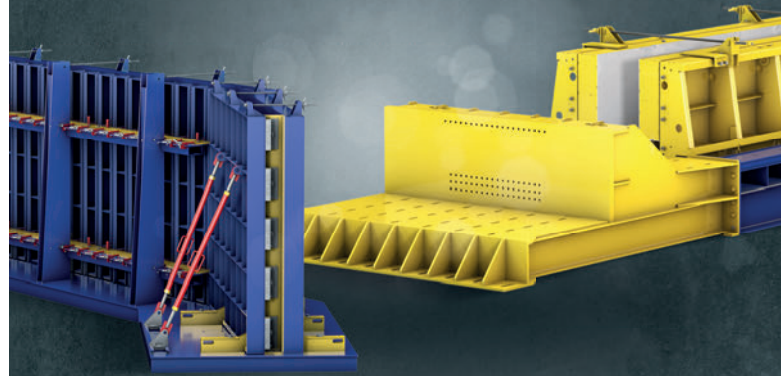


Romey Baustoffwerke GmbH & Co. KG  
Ochtendunger Straße 77, 56637 Plaidt, Germany  
T +49 2632 70070, F +49 2632 700710  
[info@romey.de](mailto:info@romey.de), [www.romey.de](http://www.romey.de)



PROGRESS GROUP

progress Maschinen & Automation AG  
Julius-Durst-Straße 100  
39042 Brixen, Italy  
T + 39 0472 979100  
[info@progress-m.com](mailto:info@progress-m.com)  
[www.progress-m.com](http://www.progress-m.com)



## CASTING TABLES AND MOLDS – INTELLIGENT AND INNOVATIVE FORMS DESIGN

RATEC tables and forms are customized to meet your needs and "Made in America". We offer a full range of forming solutions for your precast requirements: tilting tables, casting and self-stressing tables, battery molds, beam and column forms, stair molds, free-standing forms for flat panels such as sound walls or retaining walls and 3D molds for room modules.

Furthermore, we develop and produce individual mold solutions according to your requirements, such as specialty forms for highway barriers, stadium seating or any other element. Benefit from our experience and flexibility – **Meet the better ideas!**



Product catalog

RATEC America Corporation  
6003 126th Ave. North | Clearwater, FL 33760  
Phone +1-727-363-7732 | Toll free +1-877-337-2832  
[infous@ratec.org](mailto:infous@ratec.org) | [www.ratec.org](http://www.ratec.org)

