

Masa GmbH, 56626 Andernach, Germany

Successful trade fair presentation at bauma 2019

Seven days bauma in Munich: The machine-building company Masa GmbH used the world's leading trade fair as an international meeting place and offered plenty of opportunities for intensive expert talks and specialist discussions on a large and very modern booth. The booth, brightly designed with big light walls, was very well received by the trade public as well as by friends and guests from all over the world. As in previous years, Masa presented the most important exhibits and innovations in machine and plant concepts for the production of concrete blocks, sand-lime bricks and AAC elements on two floors.

In the product segment "concrete block production", the interested sector experts were informed in detail about the new premium model of the block making machines. The Masa XL-R 9.1 on site offered a number of components that attracted a great deal of interest.

The cycle time and control behavior of the XL-R are generally optimized by equipping the machine with servo hydraulics including pressure accumulator. High control quality, short reaction times and overlapping movements are also supported by Siemens TIA and the S7-1500 CPU generation. The servo-controlled hydraulics ensure that the mold is synchronized.

In the new XL-R 9.1, Masa implemented energy-efficient drive concepts based on an intelligent inverter system (vibrators, servo production pallet feed and lowering device with V-belt conveyor). The machine on Bauma site was equipped with a magnetic compaction head fastening plate. The permanent magnets used are only briefly energized for magnetizing or demagnetizing. During production, the magnets operate without current and are almost maintenance-free.

The vibration analysis was demonstrated live. Below the vibration table, contactless sensors are installed, which permanently measure the amplitude of the vibration table during production, thus ensuring consistently high-quality production.

In addition, an enlarged machine silo for main mix concrete with two separately controlled, hydraulically driven silo flaps and laser level measurement was presented. This design guarantees an extremely even filling of the filling box. The filling boxes run on continuous rails, the rails are clamped magnetically. As soon as the height of the filling unit is adjusted, the clamping opens automatically, no manual loosening or tightening is required.



Modern design of the Masa stand with light walls



The new Masa Premium model XL-R 9.1



masa
Milestone to your success

Danke!

Eine ereignisreiche Woche in München liegt hinter uns. Die bauma 2019 bot eine großartige Plattform für viele interessante Kontakte.

Ihr Besuch auf unserem Messestand hat uns sehr gefreut.

Falls Sie keine Zeit gefunden haben uns zu besuchen oder noch ein Gespräch wünschen, sind wir gerne für Sie erreichbar.

Wir freuen uns darauf, die gute Zusammenarbeit mit Ihnen auch in Zukunft fortzusetzen.

Ihr Masa Team
www.masa-group.com



Thank you!

An exciting week in Munich is behind us. bauma 2019 offered a fantastic platform for many interesting contacts.

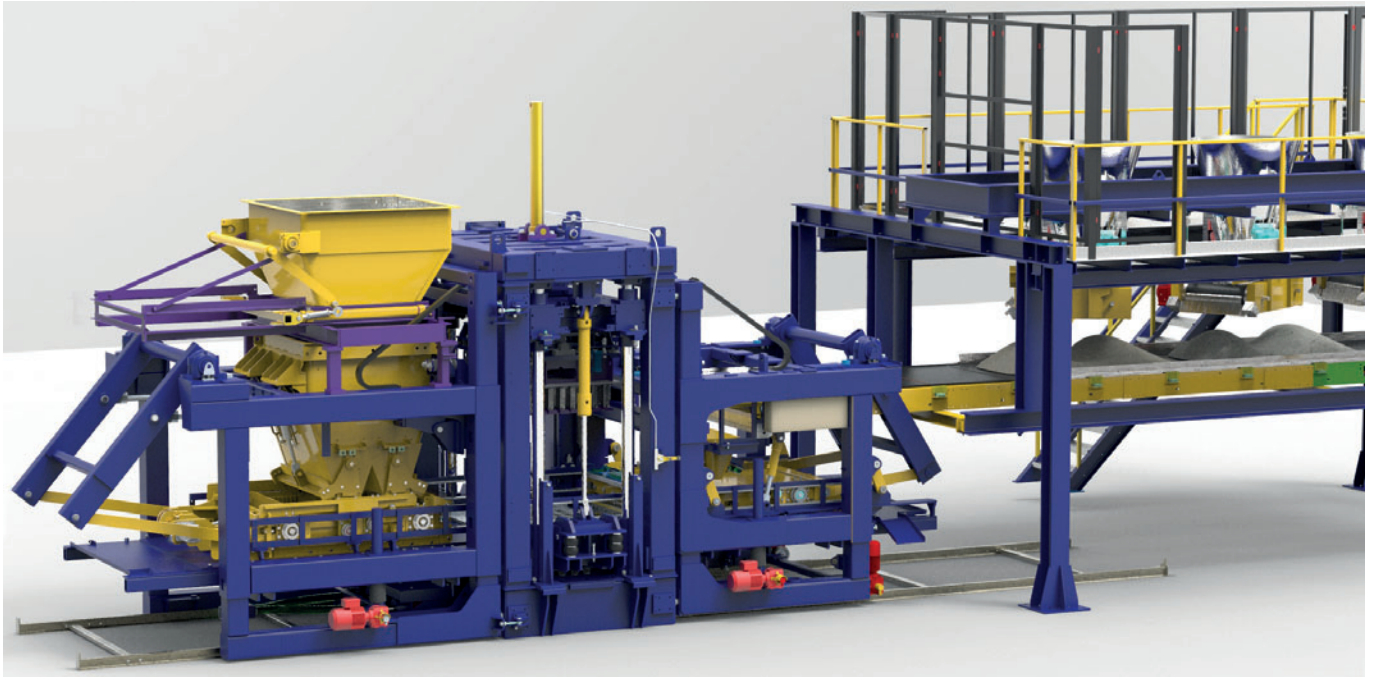
We were very pleased to welcome you at our booth.

If you didn't find the time to visit us or would still like to talk to us, we are gladly available for you.

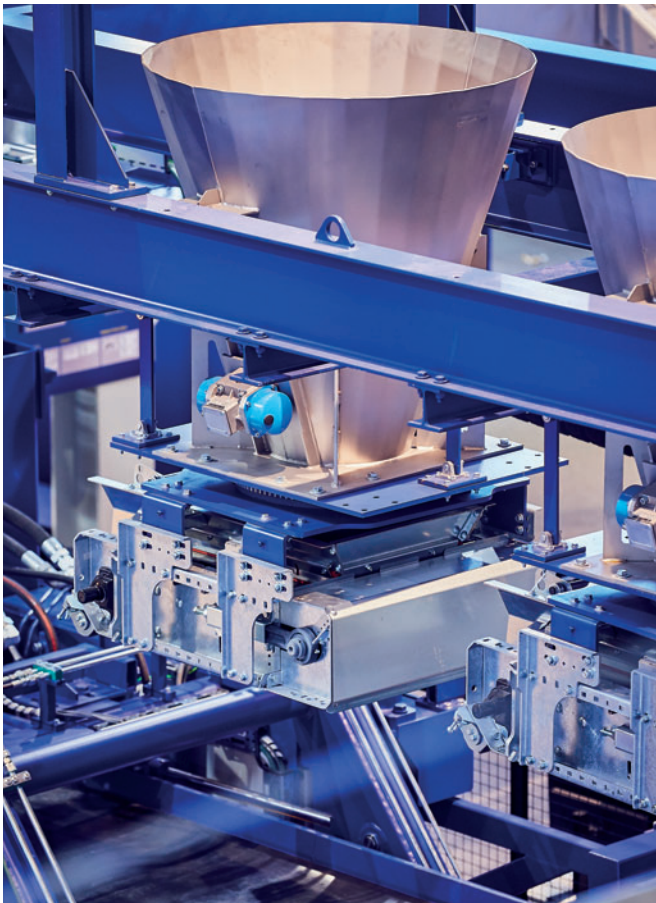
We look forward to continuing our good cooperation with you also in the future.

Masa Team
www.masa-group.com





Masa XL-R 9.1 with special face mix unit and Multi color system



Masa Multi color system



Facemix concrete mixer S 350/500

The oscillating grate in the main mix filling box was equipped with a hydraulic eccentric drive. The lift of the oscillating grate can be changed by replacing the eccentric. Since the hydraulic motor does not have to change the direction of rotation during operation, there are no pressure peaks that occur when a conventional hydraulic cylinder is switched over.

The topic of discussion directly at the machine on site was also the face mix filling unit with its special design for the Masa Multi color system. The face mix concrete is not stored in a material silo, but is requested just-in-time and filled into the filling box via a belt and a transfer chute installed on the filling box. This ensures optimum reproducibility of coloring. In addition, pre-compaction or agglomeration of the face mix is counteracted.

Although the Masa Multi color system arranged above the machine had only two silos for space reasons, it could also serve as a visual object for many questions concerning the professional production of colored concrete blocks.

The Masa S 350/500 mixer for face mix was to be found on the highest platform of the booth. It is ideally suited for the production of high-quality, differently colored face mix concrete. The platform, which had a glass floor, offered a spectacular 6 m deep view to the below block making machine. Another well-noticed exhibit from the segment of "concrete block production" was a face mix filling box on which a new device for dosing surface finishing face mix material as well as a pneumatic scraper, a hydraulically driven smoothing roller and a hydraulically driven bottom plate were installed. On two control panels in front of the block making machine, the Masa crew impressively demonstrated the possibilities of an ERP interface, the visualization "Live Motion" and the monitoring of the amplitude of the vibration table. Access to the control panels was via an RFID card.



Technical discussions in front of the face mix filling box

Both the hydraulic system of the XL-R premium block making machine and the power cabinets with new, decentralized UPS could be viewed through glass fronts at the Combiteiner. In addition to the described exhibits of the "concrete block production" product segment, the exhibits of the "sand-lime brick and aerated concrete production" segments also attracted attention. Masa demonstrated on the one hand the innovative sawing technology for minimizing cutting waste in the production of fitted bricks for the sand-lime brick industry. The strong demand for large-format products in the German-speaking area and the Benelux countries requires an increasingly economical production of the required fitted bricks. Here Masa is one of the world market leaders with its current sawing technology. At the side cutting and profiling station for aerated concrete products, the Masa crew answered questions about the sys-



EASILY. QUICKLY. GRIPPING.
www.probst-handling.com

probst
 handling equipment

tem's functionality and advantages. The aerated concrete blocks are pre-cut to length with wires and then brought to the finished size with steel knives. The steel knives produce a particularly smooth surface. After the smooth cut, two profiling knives connected in series are used to produce the tongue and groove profiles, resulting in a very smooth and fine structure of the tongue and groove. The knife connectors are attached to a rotating column, which allows easy swiveling in and out. The exchange of the knives is accelerated by a quick-change device. An integrated blow-off system cleans the aerated concrete cake of particles that have not yet been removed in the process. The end product is therefore clean, smooth and of high quality.

In a separate area on the 2nd floor, various plant layouts were simulated in a virtual, interactive environment in cooperation with the start-up company Rivex-VR. Using VR glasses, Masa customers were able to move freely in a virtual Masa plant and beam into plant areas easily and directly. Plant layouts that were previously only available on the PC can now be experienced virtually - an excellent basis for future discussions with customers. The idea was very well received, so that the expansion of the virtual presentation technology is now being considered.

The Masa Lifetime Service played an important role this year. In addition to the presentation of successful spare parts logistics and practical training software, the customer also came to the fore with two current service features: under the term "Masa Smart Service", customers were able to see for themselves the added value of the new data glasses, which considerably extend the possibilities of the previous Masa Online Support (remote maintenance). The data glasses offer a direct live view of the current system situation. An expert at the Masa location in Germany can (after the customer has logged in to the service portal) offer fast and direct help interactively via sound, image, video and also by connecting additional participants. An integrated language program with 12 spoken and 124 written languages largely eliminates communication barriers. In addition, a comprehensive data package consisting of instructions, videos, images and pdf formats is available offline on the glasses. Also a long time after the purchase, the customer continuously profits in further developments, as all contents were kept up to date via online updates. The connection is SSL-encrypted and password protected, the systems run on German servers. The customer is responsible for installation and setting up WIFI network.



Masa sand-lime brick sawing technology



Side cutting and profiling station for AAC products



Masa virtual plant

FOR ALL CURING SYSTEMS
INSULATED CHAMBERS



THE ONLY TRUE CURING RACK
KRAFT® RACKS



ACCELERATED CONCRETE CURING
QUADRIX®



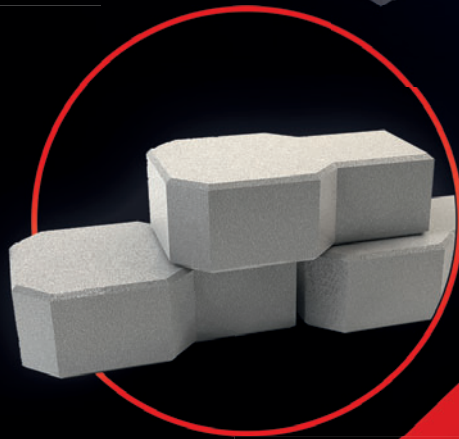
**WE THANK
ALL
VISITORS
FOR A
SUCCESSFUL
BAUMA 2019!**



PERFECT HARDENING

IN A SINGLE ATMOSPHERE CHAMBER

WWW.KRAFTCURING.COM ◀



THE BENEFITS

- REDUCED** HARDENING DURATION
- LESS RACKS AND PALLETS (UP TO 30 %)**
- CONSISTENT COLORS**
- CEMENT SAVINGS UP TO 10 %**
- NO CONDENSATION**
- LESS BREAKAGE**



CONCRETE CURING SOLUTIONS. MADE IN GERMANY ◀



Demonstration of Masa Smart Services

The Masa software tool "Predictive Maintenance" also attracted a lot of attention. In the future, it will be used to evaluate process and machine data and forecast the resulting preventive maintenance activities. Defined maintenance cycles enable the customer to obtain more precise planning and scheduling of maintenance and repair work. At the same time, it is possible to optimize spare parts inventory and capital commitment.

Conclusion

Masa rates its own appearance at bauma 2019 as an all-round success. It was not only Masa Managing Director Frank W. Reschke who spoke of the most successful bauma ever. The entire Masa team received positive feedback from customers and held profitable technical discussions about the exhibited components. Valuable discussions and intensive contract negotiations on the booth resulted not least in several signed contracts. The overall concept of the booth also contributed to this. Here, for example, friendly meeting rooms were considered as ideal retreat possibilities for discussions in small groups. All in all, Masa customers appreciated the relaxed and inviting atmosphere on the catering platform of the Masa booth and felt adequately supplied. A not inconsiderable contribution to this was also made by the back office team, who quickly and efficiently pulled the strings in the background, provided the required information immediately and ensured smooth processes. The bauma 2019 once again demonstrated the strength of the entire Masa team, which was professional and convincing in the planning, organization and implementation, especially when setting up and taking down the booth. ■



Masa sponsored the free download possibility of the pdf of this article for all readers of CPI. Please check the website www.cpi-worldwide.com/channels/masa or scan the QR code with your smartphone to get direct access to this website.



FURTHER INFORMATION

masa

Milestone to your success.

Masa GmbH
 Masa-Str. 2, 56626 Andernach, Germany
 T +49 2632 92920, F +49 2632 929212
info@masa-group.com, www.masa-group.com

Masa GmbH
 Porta Westfalica works, Osterkamp 2, 32457 Porta Westfalica, Germany
 T +49 5731 6800, F +49 5731 680183
info@masa-group.com, www.masa-group.com



Rivex-VR: VR-Soft UG (haftungsbeschränkt)
 Bahnhofstraße 10, 56203 Höhr-Grenzhausen, Germany
 T +49 176 62821003
info@vr-soft.de, www.rivex-vr.com