

Hess Group GmbH, 57299 Burbach-Wahlbach, Germany

# New Statistic system

The new Hess production statistics provides all relevant production data such as orders, shifts, staff, units, downtimes, etc. of a complete plant. All information are collected in a Microsoft SQL-Database. The data is sorted by location, plant and plant equipment. Therefore, several production facilities can be evaluated in the same evaluation. Retrofit is possible even for older Hess plants and installations of other manufactures.

A web-based visualization is used for screening the production statistics meaning that the data can be retrieved internally or externally through a web browser. Thus, these data can be called up by mobile devices such as smartphones or tablets.

## The following analysis is provided

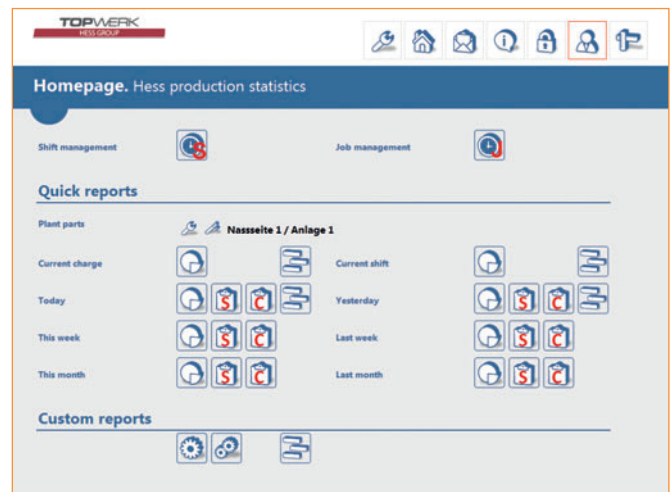
- graphical summary with all key information for a selected data field
- graphical comparison with all key information between two selected data fields
- tabular shift overview with all information for a selected data field
- tabular overview of charges with all information for a selected data field
- chronological sequence of events for the whole plant

## The following data are collected

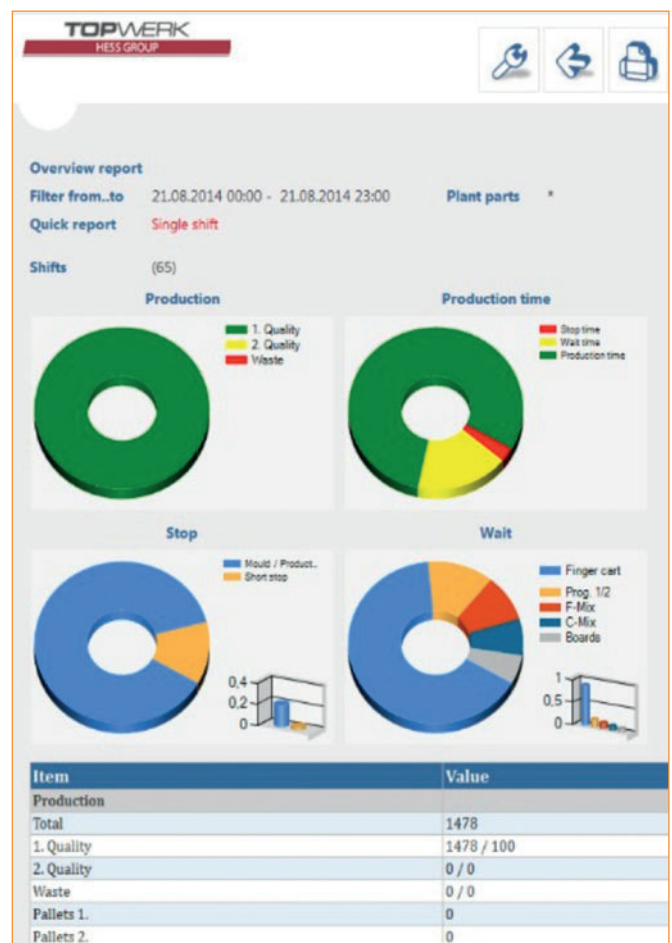
- quantity for first and second choice as well as waste
- quantity for stacked pallets
- the current state of the plant is recorded continuously (production, downtimes, waiting times,...)
- each charge can be assigned to product name, item number and order
- shifts with associated operators

## Additional functions

- automatic shift management for three-shift-operation
- manual shift management including assignment of operator
- automatic charge management when changing products
- manual charge management
- automatic maintaining of the database with task scheduler
- archiving function for older data
- automatic and manual export function to Microsoft Excel



New Hess Statistic system



Overview report

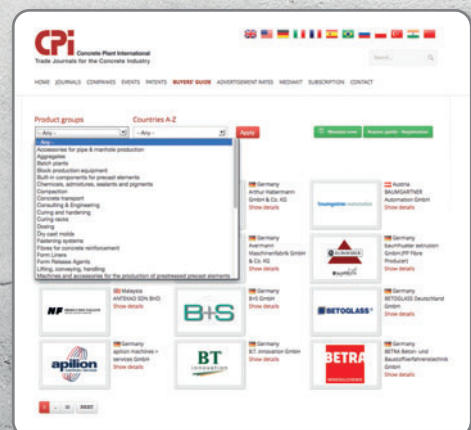
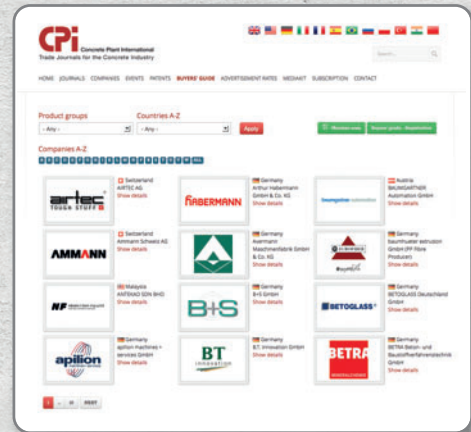


# Buyers' Guide

## New functions

As the industry demonstrates increasing digitalization of production processes (Industry 4.0) the Hess Production Statistics supports continuous improvement programs and other manufacturing excellence initiatives.

- Digital chamber and storage administration
- Link to ERP Systems (SAP, Navision, Oracle)
- Integration into customer-specific order management
- Feedback of produced quantities to customer systems
- Integration of qaver-data for quality control
- Product tracking



### FURTHER INFORMATION

**TOPWERK**  
HESS GROUP

HESS Group GmbH  
Freier-Grund-Straße 123, 57299 Burbach-Wahlbach, Germany  
T +49 2736 497 60, F +49 2736 497 6620  
[info@hessgroup.com](mailto:info@hessgroup.com), [www.hessgroup.com](http://www.hessgroup.com)

Supplier database for  
the concrete industry