

Masa GmbH, 56626 Andernach, Germany

Another concrete block plant commissioned at Transgulf Cement Products L.L.C. in Dubai

Before the end of 2016 an additional Masa block making plant was put into operation in Dubai, which produces high quality concrete products for the Arabian market. The company, Transgulf Cement Products L.L.C. is a pioneer in the concrete block industry in Dubai, who puts their trust in German equipment and know-how. The concrete paving stone product lines include a diverse selection of shapes, colors and surface treatments where aesthetic appeal is a focal point. Durable, thermal and sound insulated brickwork completed in safe manufacturing setting are further characteristics of Transgulf operations.

The long established company Masa from Andernach, Germany fulfilled these demands with no problems in the delivery of the concrete block making machine XL 9.1 and in combination with a complete ring plant as well as with an upstream dosing and mixing plant for concrete.

Masa has delivered in the past already two plants to Transgulf. Now with the third one Masa supports the expansion activities of Transgulf on the Arabian market.

Technical details (a selection)

The new plant is equipped with two Masa concrete mixers (PH 2000/3000 for main mix, S 350/500 for face mix) with a perfectly adjusted dosing plant. The mixed concrete is transported to the block making machine by a double bucket conveyor. Main and face mix concrete are separated and can be also dosed quantitatively and is flexible.

The block making machine Masa XL 9.1 is equipped with an automatic mold change, to simplify and speed up the mold change process. The integration of a height limit system ensures an utmost

production height of the products. Also a hydraulic driven smoothening roller and a bottom slide (face mix filling box) are integrated. Transgulf has decided to install an upgrade package to increase the performance of the regular Masa XL 9.1. The package includes a higher hydraulic pump capacity, an additional hydraulic accumulator and a servomotor for the ejection and feed of the production palettes. With the Masa Styrofoam inserter Transgulf can produce insulating blocks with Styrofoam inserts. The products are produced on 1400 x 1100 mm steel production pallets.

To cure the products Transgulf decided on an innovative open-plan concept from Masa: The complete curing chamber as well as elevator, finger car and lowerator are installed in a coherent climate area.

The Masa ventilation system optimizes the curing process by creating uniform climate conditions in the curing chamber. It consists of horizontally arranged air-circulating fans in a separate air shaft, vertically arranged exhaust fans and diagonally arranged humidity and temperature sensors. By means of the sensors the circulated air is monitored, the circulating air and exhaust air fans are controlled accordingly.



Masa mixing tower: Below the concrete mixers you will find the Masa double bucket conveyor

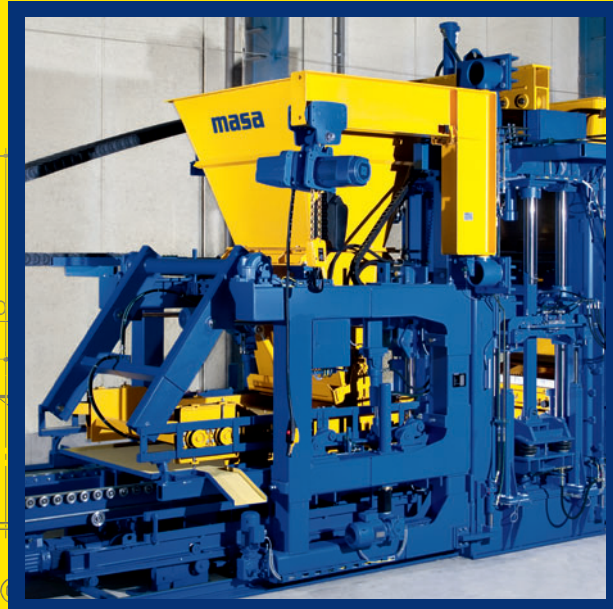


The new plant is equipped with two Masa concrete mixers: Masa mixer PH 2000/3000 (right) and Masa mixer S 350/500 (left)

masa

Milestone to your success.

Our solutions for your success



www.masa-group.com

Masa covers the complete range of machinery and ancillary equipment for the building materials industry: Batching and Mixing, Concrete Blocks/Pavers, Curbstones, Concrete Slabs, Sand Lime Bricks and Aerated Autoclaved Concrete (AAC) Products.

All technical solutions are individually planned, designed, adapted and realized for each customer, resulting in one supplier and one individual contact person.

Masa GmbH
Masa-Str. 2
56626 Andernach
Germany
Phone +49 2632 9292 0
Service Hotline +49 2632 9292 88

Masa GmbH
Werk Porta Westfalica
Osterkamp 2
32457 Porta Westfalica
Germany
Phone +49 5731 680 0

Masa-USA, LLC
2006 Wery Lane, Green Bay, WI
54313
USA
Phone +1 920 497 0390
sales@masa-usa.com

info@masa-group.com
service@masa-group.com
www.masa-group.com

Masa - made in Germany.

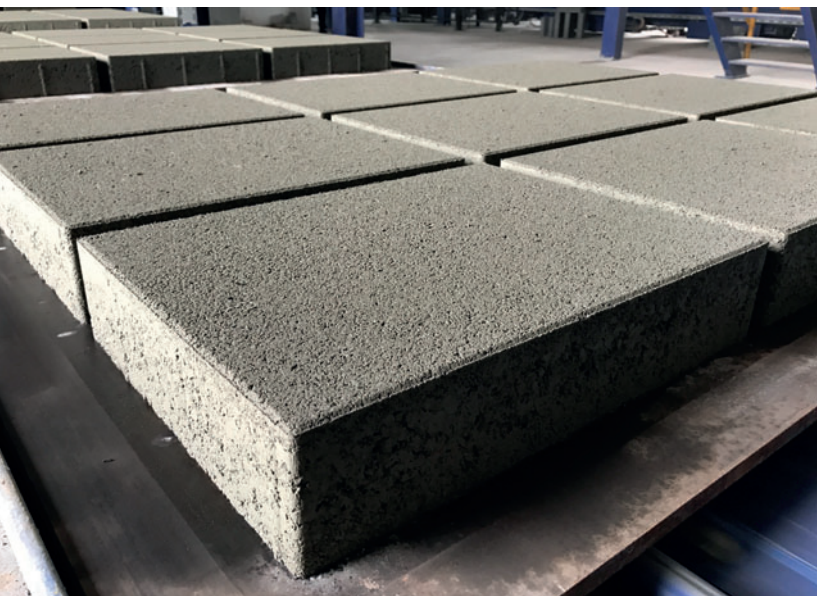




The ready mixed concrete will be transported to the block making machine by a double bucket conveyor

Before the all-servo controlled Masa Cuboter is mounted, a pulling device is installed: With this solution the "gap" between the production palettes is closed. Depending on the product, it is possible to clamp, move and pack the concrete pavers from 1.5 production paletes.

To optimize the transport process of the wet and the return transport, Transgulf is using a proven Masa solution: The Masa cross-transport with carriage and grab can buffer the production pallets on the way back to the block making machine. Furthermore, the plant efficiency is increased by allowing the wet side and return transport to work independently.



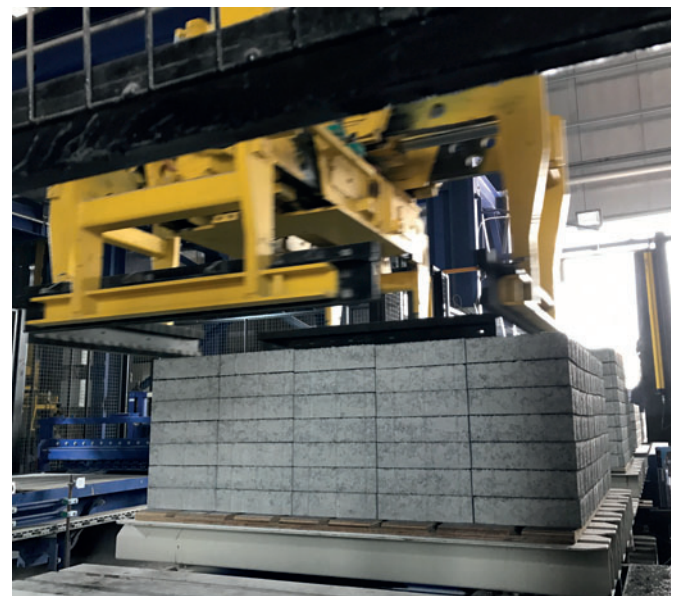
High-quality concrete blocks require a sensitive handling



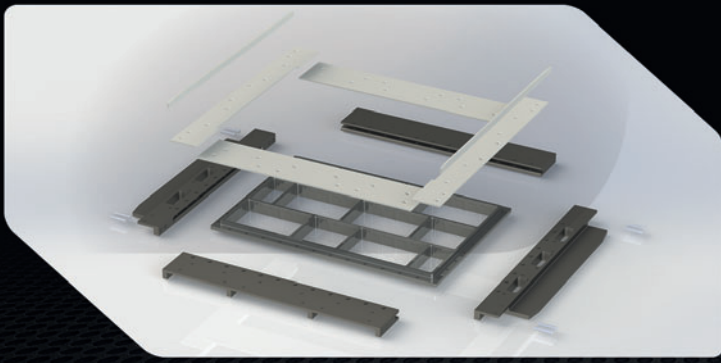
*The heart of the new plant:
Masa concrete block making machine XL 9.1*

Transgulf embraces high standards in plant control software and decided to use the software package FAST "Advanced". The Masa plant control software is a modular software for the unified operation and visualization of the components. In addition, the scope of delivery also included a product data acquisition, product data management, input security and formulation comparator or mold management.

In addition, the scope of delivery for Transgulf also includes an UPS (Uninterruptible Power Supply) that protects the operation of the PLC (programmable logic control) systems (including fieldbus) and computers in case of power failure.

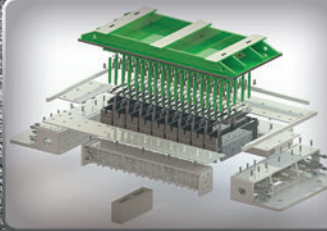


With the Masa Cuboter complete block layers will be assembled to a stone cube



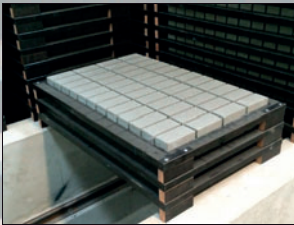
A masterpiece in
a class of its own

FERROMOD
GMBH



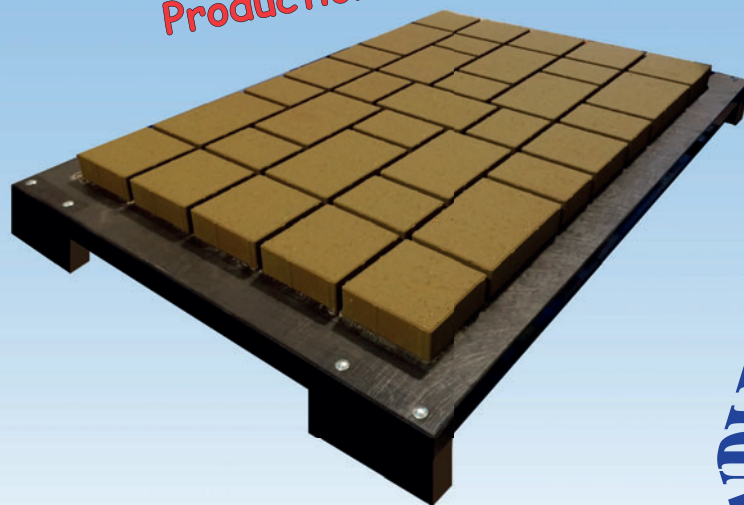
Milled
Case Hardened
Assembled

WWW.FERROMOD.COM



www.CONPLEX.com

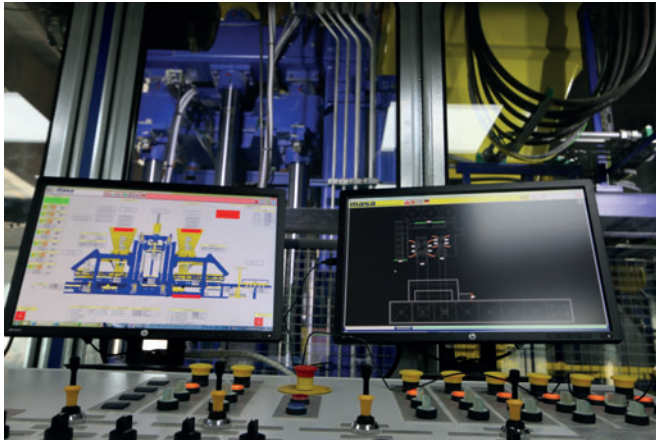
The **NEW** Generation
Production Boards



Complex BV
The Netherlands

Tel.: (+31) 575 - 467404 - E-mail: info@complex.com

CONPLEX® PRODUCTION BOARDS



Masa Fast: A modular plant control software for uniform operation and visualization of the plant components

Long-term partnership pays off

The long-term business partnership of Transgulf and Masa pays off again and proved to be an advantage. During the entire planning period the communication between both companies was extremely positive. For example, there was an open discussion about the installation of a multi-color system for the future. The result is that the plant is now already designed for a plant expansion to produce colored products. The first from Transgulf preferred single-buffer for production pallets was later revised and a Masa proven solution was installed. It goes without saying that Masa supports the company Transgulf during the complete assembly. The integration of the process control for an external color dosing runs without problems. Subsequent layout modifications in the package transport area were implemented flexibly. All participants benefited from the close contact during the whole assembly phase: The Masa subsidiary in Dubai (Masa Middle East) sent high qualified technicians and a smooth installation and commissioning of the new plant has been completed successfully.

“We are very satisfied with the project progress and today we are able to increase substantially our production capacities”, said an enthusiastic Managing Director and company owner Mr. Masood Mohammad Hassan Pour after a successful commissioning of the plant. “Two values lie at the heart of Transgulf’s operations in the UAE: Exceptional customer service and constant innovation. With Masa we have a decade long partner by our side, who understand our two founding principles, which have guided us from the beginning. This is our common key to success.”

About Transgulf

Founded in 1996, Transgulf Cement Products is today one of the leading suppliers of concrete products in the GCC region. At the beginning concrete products were produced with mobile Egg layers, but Transgulf acknowledges in the middle of the 2000s the wish for high-quality products. With the purchase of the first fully automatic Masa concrete block making machine, Transgulf successfully switched to a stationary production. From this moment Transgulf offers their customers for more than one-decade quality products for every demand. The wide range of concrete products include in addition to colored and finished paving stones, curbstones in different forms, hollow blocks and insulated blocks. Equipped with an own research and development department, Transgulf’s experts are committed to develop new innovative solution which can be matched to the customer needs.



Masa sponsored the free download possibility of the pdf of this article for all readers of CPI. Please check the website www.cpi-worldwide.com/channels/masa or scan the QR code with your smartphone to get direct access to this website.



FURTHER INFORMATION

masa

Milestone to your success.

Masa GmbH
Masa-Str. 2
56626 Andernach, Germany
T +49 2632 92920
F +49 2632 929211
info@masa-group.com
www.masa-group.com



Transgulf Cement Products L.L.C.
PO Box No. 25595
Dubai, UAE
T +971 04 8801020
F +971 04 8801021
info@tgcp.ae
www.tgcp.ae