

Progress Group, Frankfurt, Germany

New high-performance plant with machinery capacity of 12 pallets per hour opened in Thailand

Pruksa Real Estate Public Co. Ltd. is a leading company for residential construction using precast concrete elements in Thailand and has realised already the second precast plant together with the Progress Group, a full-range supplier for the precast concrete industry. With an extraordinary investment in equipment from Ebawe Anlagentechnik and Progress Maschinen & Automation, both subsidiary companies of the Progress Group, Pruksa has built a new solid wall plant with enormous capacities and in doing so has further strengthened its market position.

It is already the second high-performance plant to be installed by Ebawe and Progress at the end customer Pruksa in Thailand. Following the commissioning in 2010 of the first fully automated plant with a capacity of 10 pallets per hour, the Asian building contractor has set the bar even higher this time: the new plant was to be equipped with an even higher level of automation in order to ensure an increased capacity of 12 pallets per hour. Particular refinements in this second new plant, which was erected in the Nawa Nakorn industrial area near Bangkok, include automatic picking and insertion of the reinforcement meshes, the automatic washing of the concrete spreader and bucket, the smoothing of the solid wall elements by means of six automatic power trowels and an extensive outdoor storage system with automated warehouse management.

'Green' plant

Pruksa knows the needs of the Thai market very precisely: having been in business for 21 years, the corporate philosophy of offering high quality living space at affordable prices has proven successful. With the new plant Pruksa can achieve an additional capacity of 480 houses per month. In order to secure the demand on a long-term basis, the Thai building contractor has its own department for new developments: the Pruksa Innovation Centre concerns itself with new trends and ideas for building processes, building materials and building methods.

The second newly delivered Progress Group plant not only makes use of the latest German-made machine technology, it also meets the high demands for environmental friendliness. This 'green' plant was equipped with a recycling system that separates surplus concrete and dirty water from each other and feeds them back to the production process for further use. For Pruksa it was also important to reduce the



View inside the new high-performance plant at Pruksa: the demoulding and shuttering of the pallets as well as the cleaning and oiling of the pallets and required shuttering elements are completely automated.



The M-System Evolution mesh welding plant manufactures the reinforcement meshes just in time to precisely fit the respective pallet.

CONCRETE VISION

EBAWE designs, engineers and installs complete production plants for the manufacture of the most varied precast concrete panels. We are the ideal partner for your projects – regardless of size and kind.

www.ebawe.de

Stand #414, hall B1
11.04. – 17.04.2016

bauma 2016

www.bauma.de
Munich – Germany



PROGRESS GROUP



Much use was made of automation in the new plant: the automatic picking and placing of the meshes in the shuttered pallets is carried out by a handling spreader bar.

noise levels of the machines in order to create a more healthy and pleasant working climate for the workforce.

Production sequence for the manufacture of solid wall elements

A total of 140 pallets circulate in Pruska's new plant. A production cycle starts with the manual deactivation of the shuttering magnets. At the demoulding station the pallets are initially scanned and the shuttering elements are automatically lifted off by two demoulding robots and set down on a conveyor belt which takes them through the cleaning unit. Following the removal of the produced concrete elements, the pallets are conveyed onwards by transverse displacers

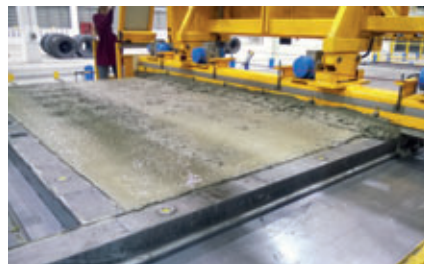
and cleaned with the stationary cleaning unit. The release agent spraying unit applies a thin film of oil to the shuttering surfaces and thus prepares them for the next cycle.

The pallets are automatically shuttered by two combined shuttering and storage robots on the basis of data transmitted by ebos®. The storage robot picks up the cleaned shuttering from the store and places it on a conveyor belt. After that it passes through a release agent spraying unit. The shuttering robot finally takes up the oiled shuttering and places it according to the element outlines on the pallet surface. Several cycle stations are available for manual placement of additional shuttering and cutouts as well as built-in components.

The required reinforcements are meanwhile produced just in time in accordance with the data sent by ebos®. The new plant is equipped with a fully automatic mesh welding machine, a handling spreader bar for the automatic placement of the meshes, a mesh buffer that serves as an intermediate store, a trolley car for the produced reinforcement meshes as well as an automatic stirrup bending machine. The special feature is the enormous saving of time achieved with the mesh buffer. This makes it possible to produce the reinforcement meshes in advance, to store them intermediately and to insert the appropriate finished mesh without delay when the pallet drives in. Production is thus not only flexible, but also efficient.



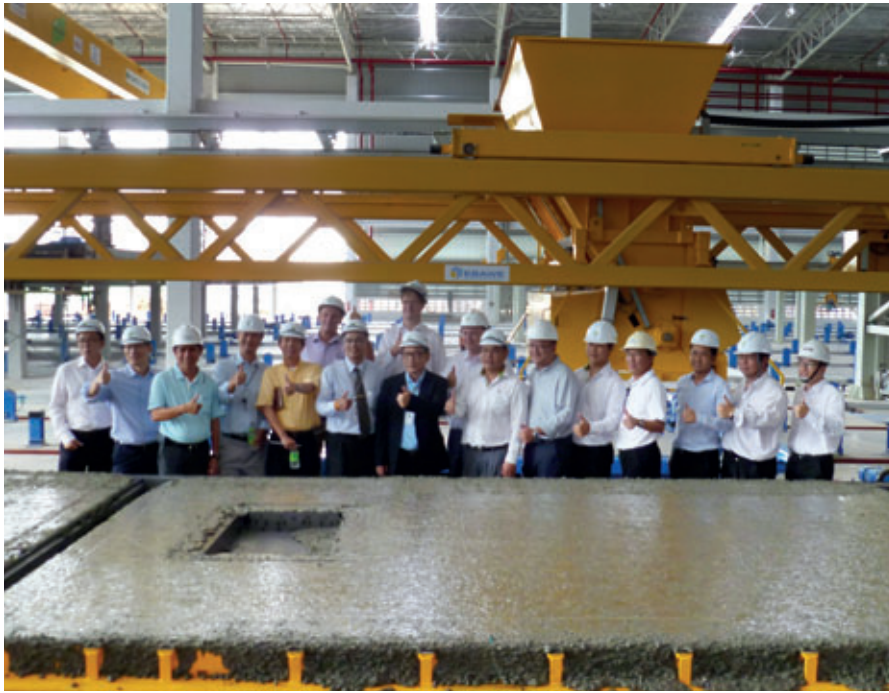
The concrete distributor at Pruksa can discharge over the entire width of the pallet. This leads to enormous savings of time in the production sequence.



The solid wall element is drawn off and smoothed to the desired height by externally attached vibrators.



The new plant near Bangkok is equipped with six power trowels and 24 smoothing stations places for the fine smoothing of the element surfaces. Thanks to fully automatic operation, the cycle times are reduced to a minimum and personnel savings are achieved.



Thumbs up for the successful concreting of the first elements! The teams from Prukša and Progress Group did their utmost to keep to the contractually agreed date.

The new bucket track ensures the supply of fresh concrete at the discharge point. The elements are concreted with a concrete distributor that discharges over the full width of the pallet and has a volume of 4 m³. A single concreting process is thus sufficient for the majority of the elements, which leads to considerable time savings.

The freshly discharged concrete is compacted with the aid of four compaction units that set the pallets in horizontal motion. The element is drawn off and smoothed to the desired height by a vibrating levelling beam. Attached external vibrators perform additional compaction according to the concrete layer depth.

The washing of the bucket and concrete distributor was automated in Prukša's new plant: both items of equipment drive without manual operation to the washing station, where they are automatically washed with the aid of a spraying lance and various nozzles. The water used for washing as well as the residual concrete are separated by a recycling system and fed back to the mixing plant for further use.

A total of six power trowels and 24 smoothing places are available for the fine smoothing of the element surfaces. Smoothing takes place fully automatically and without manual operation. This ensures a very finely smoothed concrete surface that can be painted without later rework and additionally achieves high savings on personnel. A storage and retrieval machine places the pallets for hardening into a stacking rack that has more than 112 hardening places. Following the dwell time in the rack calculated by ebos the pallets are automatically removed. Four tilting units are available for the removal of the finished wall elements.

Outdoor store with automated warehouse management

The elements removed with the aid of a crane are placed in transport cradles, so-called racks, which are taken up directly by a cross-lifting truck of the run-off truck. The run-off truck transports the racks to an enormous, automated external storage system and transfers them there to one of three trolleys, which drives the racks to the appropriate storage place in the outdoor store and deposits them there. For transport to the building site, three further run-off trucks with cross-lifting trucks pick up the racks from the outdoor store again and transport them to the collection places for the truck loading. The store has a capacity of 450 racks.



The pallets are put into and taken out of storage by a fully automatic storage and retrieval machine. ebos® calculates the necessary dwell time in the hardening rack and transmits this data accordingly to the machine.



The outdoor store at Pruksa is impressive: it offers space for 450 racks in which the finished solid walls are stored. The total warehouse management is completely automated – a further highlight of Pruksa’s high performance plant.

Tailor-made software solution

ebos takes care of the control, monitoring and optimisation of the entire precast element production in the new plant and convinces with a simple and intuitive operating concept. Thanks to its numerous functions and various features, complex interface problems are eliminated and work processes are facilitated for employees in the entire plant.

Strong growing industrial nation in Southeast Asia

With an estimated current population of about 69 million people, Thailand is one of the 20 most densely populated countries in the world. There is enough room and the tropical climate also favours building all year round. It is therefore hardly a surprise that demand is constantly growing for inexpensive, but nevertheless high-quality housing that is also earthquake-resistant and heat repellent.

Pruksa’s range of town and detached houses as well as single-storey and multi-storey

freehold apartments covers precisely these needs. Customers can choose between numerous variants and styles. The ordered building is always handed over turnkey and is subject to strict quality checks.

Unlike most builders, Pruksa carries out the construction of the projects itself, knows all the project-relevant specifications and guarantees a detailed design in accordance with the order. The entire building project is supervised from the groundbreaking to the end customer by the company’s own engineers and foremen, who rigorously control the construction time and costs in addition to quality assurance. External suppliers are hired only for certain performances such as foundation and roofing work and must adhere to Pruksa’s strict standards and specifications.

With this strategy the building contractor has managed to become the low-cost market leader among Thailand’s builders and is considered today to be the leading manufacturer of solid walls in the worldwide precast industry.



Pruksa’s philosophy is the realisation of high quality, but nevertheless affordable living space for Thailand’s population. The detached houses or single-storey and multi-storey freehold apartments are always handed over turnkey to the customers and are subject to strict quality control from the groundbreaking to the interior finishings.

FURTHER INFORMATION



Pruksa Real Estate Public Co Ltd.
 Factory 6, Khlong Luang
 Phaholyothin Road 69/5 Moo 11
 12120 Pathum Thani, Thailand
 T + 66 25328124
 F + 66 25328123
info@pruksa.com
www.pruksa.com



PROGRESS GROUP

Ebawe Anlagentechnik GmbH
 Dübener Landstr. 58
 04838 Eilenburg, Germany
 T +49 3423 6650
 F +49 3423 665200
info@ebawe.de
www.ebawe.de



progress

Maschinen & Automation

PROGRESS GROUP

progress Maschinen & Automation AG
 Julius-Durst-Str. 100
 39042 Brixen, Italy
 T +39 0472 979100
 F +39 0472 979200
info@progress-m.com
www.progress-m.com

