

Masa GmbH, 56626 Andernach, Germany

Kann modernises its Leipzig production location with new concrete block making machine

Paving stone systems, walls, steps, palisades and slabs, both for public open space construction, for commercial properties and last but not least for garden and landscape construction, are the special fields of the Kann company. With over 80 years of experience in these fields, Kann offers its customers a large number of building materials for different areas of application. A further concrete block making machine from Masa GmbH was very recently added to Kann's machine pool at its Leipzig location.

■ Klaus Wilms and Hyun-Dee Ro,
Masa GmbH, Germany ■

Kann – quality and innovation

The name of the traditional Kann company, whose head office is in Bendorf-Mülhofen on the Rhine, is a byword for quality and delivery capacity. To continue to guarantee this in future, Kann commissioned Masa GmbH from Andernach to convert the exist-

ing production plant for the company's branch works in Leipzig. 'Investment in the future through innovation' – the production facility in Leipzig, which went into operation in the 1990s, was converted with this mission statement. "The decision to invest in new machines was taken in order to ensure the continuous high quality of our products and also our delivery capacity", says Leipzig branch manager Harald Plaschnik.

In order to do justice to this quality standard, watchful eyes recognised early on that space needed to be made for a new, modern manufacturing plant.

"The old concrete block making machine had to be replaced by a modern block making machine. Due to the age of the machine it had become more and more difficult lately to meet our own quality standard", Plaschnik continues.



The traditional Kann company's modernised concrete block making machine at the works in Leipzig



The XL 9.1 concrete block making machine can be observed through the window facade of the sound insulating enclosure



The Kann employees are always in control with the Masa FAST plant control software



The new Masa XL 9.1 concrete block making machine at the Kann company's Leipzig plant

masa

Milestone to your success.

Our solutions for your success



www.masa-group.com

Masa covers the complete range of machinery and ancillary equipment for the building materials industry: Batching and Mixing, Concrete Blocks/Pavers, Kerbstones, Concrete Slabs, Sand Lime Bricks and Aerated Concrete (AAC).

All technical solutions are individually planned, designed, adapted and realised for each customer, resulting in one supplier and one individual contact person.

Masa GmbH

Masa-Str. 2
56626 Andernach
Germany
Phone +49 2632 9292 0
Service Hotline +49 2632 9292 88

Masa GmbH

Werk Porta Westfalica
Osterkamp 2
32457 Porta Westfalica
Germany
Phone +49 5731 680 0

Masa Concrete Plants India Pvt. Ltd.

#5B, KIADB, Bommasandra Ind. Area
Attibele, Bangalore 560 099
India
Phone +91 80 2628 3888
Mail info@masa-india.com

info@masa-group.com

service@masa-group.com
www.masa-group.com

Masa - made in Germany.





The Masa XL 9.1 concrete block making machine



Masa washing plant

Therefore, also on account of the quality, an order was placed with Masa for what is now the third machine within the last two years.

"However, we didn't just want to replace the old plant, but also to expand our overall capacity and to produce more flexibly according to the customer's wishes in the future as well", says Plaschnik. "In order to meet this request, the current drying chamber was expanded and given a new housing."

The new circulation plant now has a regrouping station and a modern 3-station washing plant from Masa. "In future we will be able to meet the present-day high mar-

ket requirements with regard to washed concrete surfaces", Plaschnik stresses.

Producing more economically and with a higher quality – Kann uses the Masa XL 9.1 concrete block making machine

Thanks to the new regrouping station, products that were originally manufactured on the mobile block machine can now be produced by Kann Leipzig more economically and with a higher quality on the new block making machine.

The XL 9.1 concrete block making machine from Masa is used. Masa's flagship concrete block making machine is equipped with very modern and mature technology.

The XL9.1 is characterised by the production of concrete blocks of all kinds with a particularly high height accuracy, short cycle times, very high daily production quantities and very appealing product qualities.

A further big advantage of the XL9.1 is the fast, automated mould changing procedure. The changing procedure is started via the plant controller. Following the completion of the last production cycle, the mould – including the tamper – automatically drives forwards for changing. If the concrete recipe is unchanged, the XL9.1 can already produce the next blocks in a new mould and with a block height of up to 500 mm after 7 to 8 minutes.



The distance between the forks is adapted to the product height



Masa transfer table with new large chamber system and ventilation system



Good solutions do more good.

When tried and trusted technology, economy and top quality come together, what results is something quite new:

WASA WOODPLAST[®]

A technically perfected and economic symbiosis between high-performance WASA UNIPLAST[®] ULTRA board and inexpensive wooden board.

The benefits from the latest addition to our range:

- Extremely impact-resistant, break-proof and rigid in the face of bending forces
- Optionally available with softwood or hardwood core
- Fully enclosed plastic surface with no joints
- Fully galvanised C-shaped profiles provide protection in board magazines
- Low weight

BOARDS

As the biggest manufacturer of production boards in the world, our philosophy is to offer products which perfectly meet our customers' individual needs. For this reason our range is gaining a new addition. WASA WOODPLAST[®] combines our unique knowledge in the manufacture of boards with the production of tough polyurethane moulds for the wetcast industry.





Masa 3-station washing plant is used

Kann will use a Masa 3-station washing plant at the Leipzig site in future. The plant is characterised in particular by the successful washing pattern and the integrated gushing water device. Cement residues are removed very well by the latter.

Masa FAST – the modular plant control software for modern production plants

“Uniform operation and the visualisation of the machines are helpful to me not only in everyday work”, a Kann employee in Leipzig reports. “A modern production plant requires state-of-the-art plant control software”, adds Plaschnik. “A customer-oriented operating concept is a major success factor in the control of production plants with a high degree of automation.” In order to do meet this standard, the modular plant control software Masa Factory Automation Service Tools, or Masa FAST for short, is used.

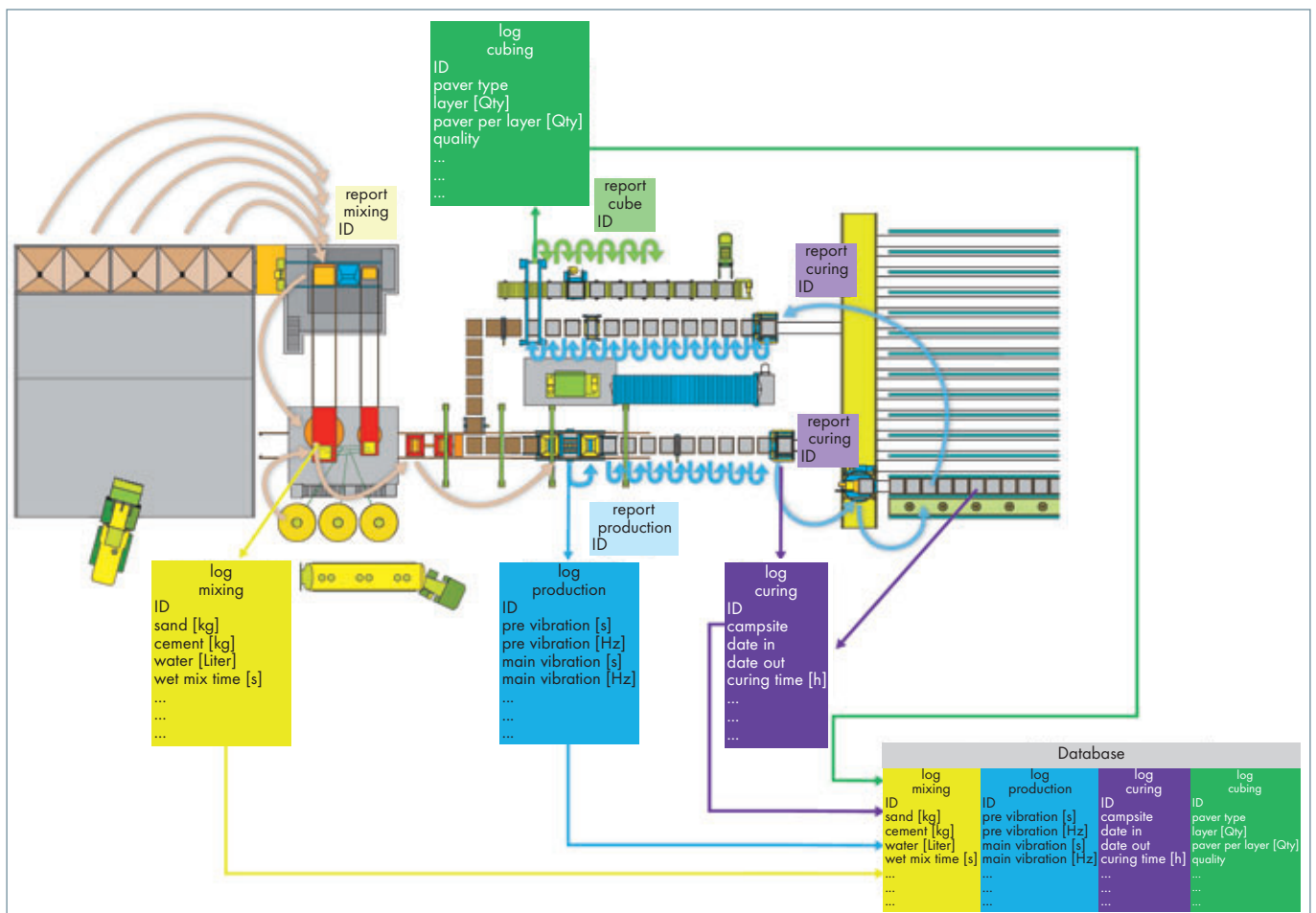
The FAST plant control software from Masa is characterised not only by its clear structure. 3D plant images are used to enable fast navigation.

Dry side with remodelling for paving stones; production of garden and landscape construction products and kerbstones at optimum speeds

Expansion of the drying chamber makes for greater flexibility

Kann’s flexibility is also increased by the newly gained storage space in the drying chamber. “Due to different drying times for the different products, we had to be very

creative in the past”, Plaschnik explains. “We can now produce products that can sometimes remain in the chamber for 3 days without us having to worry too much about the capacity. We can act flexibly to suit our customers’ wishes.”



Schematic representation: Masa data transfer system from the raw material to the block package

Announcement

11th International Conference on Concrete Block Pavement 9th - 11th September 2015 Dresden, Germany

INVITATION

The 11th International Conference on Concrete Block Pavement, organized by FGSV (German Road and Transportation Research Association) and Technische Universität Dresden, Institute of Pavement Engineering, will take place in Dresden, Germany from 9th to 11th September 2015. The Conference is a succession of various conferences which successfully took place in San Francisco, Buenos Aires and Shanghai. This international conference is to be organized as planned long term series of events to discuss and promote technical and scientific progress of recent developments/issues in the design and construction of block pavements worldwide.

MAIN TOPICS

- Road Construction
- Pavement Design
- Landscape Design
- Innovations and Research
- Ecological Aspects
- Maintenance
- Production Technology and Material

DATE

End of november the announcement with registration form, accomodation details and programme will be published.

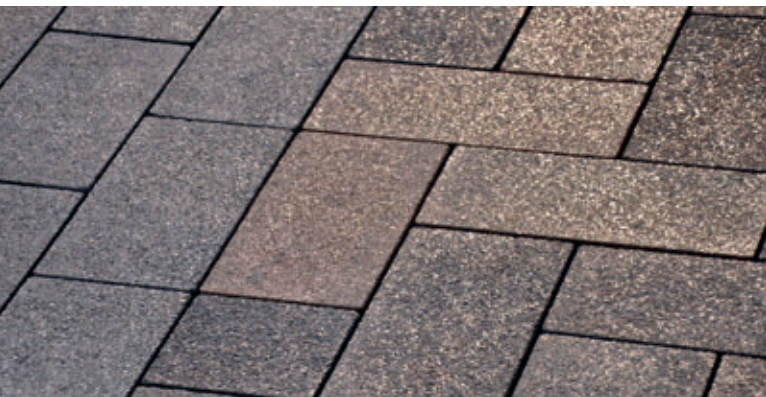
CONFERENCE LANGUAGES

The languages of the conference are English and German with simultaneous translation.

EXHIBITION

A parallel exhibition will take place during the Conference.

Contributions from specialists from all over the world are invited to help to achieve these objectives. Participation in the conference will provide a common platform for decision makers, managers, maintenance engineers, practitioners and researchers to share their international experience in block pavement design and construction.



Information – Communication



For any further information please contact
German Road and Transportation Research Association
An Lyskirchen 14
D - 50676 Cologne / Germany
Phone: + 49 221 93583-0
Fax: + 49 221 93583-73
Mail: info@fgsv.de · Details see: www.iccbp.org



Exhibition
ad-media GmbH
Industriestraße 180
D - 50999 Cologne / Germany
Phone: + 49 2236 9623 90
Fax: + 49 2236 9623 96
Mail: info@cp-worldwide.com
www.cpi-worldwide.com



Scientific mentoring
Prof. Dr.-Ing. habil. Frohmüt Wellner
Technische Universität Dresden
Institute of Pavement Engineering
D - 01062 Dresden / Germany
Phone: + 49 351 463-32817
Fax: + 49 351 463-37705
Mail: iccbp2015@mailbox.tu-dresden.de

Support



Sponsors



Media Partner





Horizontal strapping of individual layers – strapping takes place both on the return transport and during remodelling



The Masa Cuboter has no hydraulic components; it uses exclusively servo drives

Highlight: Masa FAST recipe management

One of the special highlights of the Masa FAST software is its customer-specific recipe management, which can store and retrieve up to 200 recipes. All data for the manufacture of a certain product are stored in the system. This not only includes the recipe; in fact, all information for the control of the plant are stored in order to manufacture a product professionally. Whether finger car, packaging or the conveying systems in the plant – all components are automatically adapted to the specific product on the basis of the recipe.

“Thanks to the FAST recipe management we can convert the production with no great effort. The plant need not be stopped completely, neither must manual adjustments be made to the finger car. Everything runs automatically and saves us time”, says the delighted Kann employee in Leipzig.

Masa Cuboter

Kann uses the Masa Cuboter for the cubing of the concrete blocks. Despite the unusually long distance between the production pallet and the Europallet, the Masa Cuboter ensures that the production process runs smoothly. The Cuboter does

entirely without hydraulic components. The cubing clamps are equipped with servo motors and carry the loads reliably even at high cubing speeds.

Difficult conditions and a tight schedule – new concrete block making machine goes into operation on time

The extremely tight time schedule began with the final day of production on 26 October 2012.

For the placement of the order, clear criteria were stipulated from the very outset that had to be complied with and fulfilled



Packed and ready for delivery



Safe working without loss of time – thanks to the light barriers the strips can be positioned reliably without disturbing the overall plant sequence



Stacked and buffered until the next use

100%. Apart from the short construction period of the plant, a guaranteed completion date was specified.

The old plant and the product circulation were dismantled in just a few days. A new machine foundation was laid in the factory buildings in Turnauer Straße to withstand the increased loads from block making with the XL9.1. The first Masa mechanics were able to travel to Leipzig according to plan and begin with the construction of the new XL9.1 concrete block making machine.

“We are very satisfied with the course of the project and the conversion. The schedule that we specified was tightly organised and we set ourselves ambitious dates. We know that, but everyone involved did their homework and everything went perfectly”, says a project manager from Kann.

The work in the Leipzig plant was completed punctually by Masa on the agreed date. The new, modern concrete block making machine was finished and ready for production as planned, despite the tight schedule. Ready for the next milestone in the success story of the traditional Kann company.

Dr. Matthias Liersch, one of the three chief executive officers of the Kann Baustoffwerke, thanks his own employees and all companies involved and says in summary, “We are sure that we are very well set up for the future with this investment.”



Masa Powertainer



Masa sponsored the free download possibility of the pdf of this article for all readers of CPI. Please check the website www.cpi-worldwide.com/channels/masa or scan the QR code with your smartphone to get direct access to this website.



FURTHER INFORMATION



KANN GmbH Baustoffwerke
Hauptverwaltung
Bendorfer Straße
56170 Bendorf-Mülhofen, Germany
T +49 2622 7070
F +49 2622 707165
info@kann.de
www.kann.de

KANN Baustoffwerke Leipzig GmbH & Co. KG
Tornauer Straße 1
04356 Leipzig, Germany
T +49 341 526040



Masa GmbH
Masa-Straße 2
56626 Andernach, Germany
T +49 2632 92920
F +49 2632 929211
info@masa-group.com
www.masa-group.com



Hyun-Dee Ro – Responsible for marketing for the Masa Group

Hyun-Dee Ro has been supporting Masa GmbH's marketing at the Andernach site, Rhineland-Palatinate, since 1 January 2014. In his capacity as the person responsible for marketing, he is in charge of the expansion of international marketing concepts in close co-operation with the sales management. “Our common goal is the strengthening of the company on the world market in order to generate lasting growth”, explains Ro. The major points of the new marketing measures are a worldwide co-ordinated communication strategy and stringent public relations.

H.Ro@masa-group.com