

Elematic, 37801 Akaa, Finland

Working together to make buildings safer in the world's most earthquake-prone zone

Increasingly, precast structures are used to make residential and commercial buildings stronger and more capable of carrying the unexpected loads of seismic instability. Compared with conventional building methods, precast also offers the most economical solution for any high-rise building or project with lots of repetition.

■ Tuji Aro, Finland ■

DDT Konstruct Inc in the Philippines is a dynamic construction corporation using the latest precast technology. The company started out as a modest sub-contractor and has gradually worked their way in 12 years to become an AAA Contractor. During these years of growth, they never lost focus of their corporate strategy of partnering with their clients, professionals in the construction industry, sub-contractors, and suppliers as well. DDT endeavors to share knowledge as a means of giving back to the industry that provided them a niche in construction.

Today, DDT is growing together with Elematic and the two companies are working to develop precast construction in the Philippines.

"It all started out in 2010, when Mr. Leo Buenaventura, working at our representative company in the Philippines, Rieckermann Philippines Inc, contacted DDT", says Mr. Ari Mellanen, Sales Director, Asia, at Elematic. "The discussions quickly reached a stage where offers were made, and already in the autumn of 2011, a contract was reached to build a modern, highly automated precast production facility."

The factory was built during 2012, and later that same year production was already in full swing. "Mr. Danilo D. Tamayo,



Acotec-Line at DDT with automatic precuring storage

President and Chairman of the Board at DDT, was actively involved in the negotiations and we were proud to wish him welcome to Finland to visit similar production facilities", Mellanen continues.

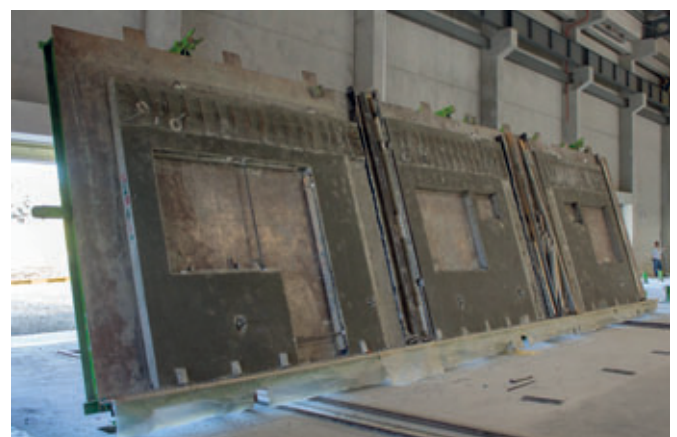
Circulating line and Acotec-line with full automation

The result of the negotiations was in fact two contracts. The first was a circulating line

with twenty-four tables of 3.5 x 13 meters for structural wall production. The delivery consisted of a Batching and Mixing Plant, a concrete delivery system, a circulating line with a Comcaster casting machine, a plotting station, and an automated concrete transport system, and a precast wall panel transport system for storage. All highly automated.



Comcaster casting machine at DDT



Precast facade panels at tilting station



Acotec-wall installation

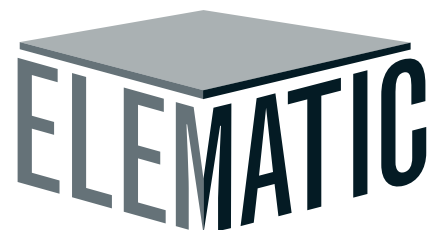
Currently, Elematic is making an expansion plan for both production lines because of the increased demand for the manufactured products.

The second contract consisted of an Acotec wall panel factory with a capacity of over 200,000 m² annually, producing non-load-bearing wall panels that are 600 mm wide and cut to room height. Available thicknesses are 75 mm, 100 mm, 120 mm, and 140 mm. The Acotec factory has its own B & M Plant, an automated storage system, and fully automated production. The end products are used as partition walls for condominiums, apartment buildings, and other housing units as well as for commercial buildings.

Construction is booming in the Philippines, and the lack of professionals in the building business is accelerating the growth of precast concrete products. Currently, DDT is using the products they manufacture only for their own development due to insufficient capacity.



A SMART
MATCH
FOR EVERY
PRECAST NEED



SMART EVOLUTION



In the picture from the left are: Leo Buenaventura - Rieckermann, Rami Lendoza - DDT, Mrs. Cynthia Tamayo - DDT, Mr. Danilo Tamayo - DDT's CEO, Leo Sandqvist - Elematic CEO at that time, Mr. Petri Vesa - Sales director of Elematic, Juha Tuomola - Elematic.

Excellent strength and economy with precast wall structures

Acotec wall panels are replacing conventional clay brick walls in Philippines as in many other countries. The installation is dry, only a skim coat and no plastering is needed, and overall, the installation of Acotec is six times faster than laying bricks. Excellent as partition walls in all kinds of buildings, Acotec-walls are light, economical, safe, moisture resistant, sound and fire proof as well as fully recyclable. In addition, the wall hollows work as natural conduits for electrical wires and other piping - another place to save in costs and manpower.

The Philippines is considered to be one of the most earthquake-prone countries of the world. This can be attributed to the fact that it lies along the Circum-Pacific Seismic Belt where most of the seismic activities are concentrated. In the past, frequent earthquakes have occurred in the area, some of which have caused widespread destruction. Increasingly, precast structures are used to make resi-

dential and commercial buildings stronger and capable of carrying the unexpected loads of seismic instability. Compared with conventional building methods, precast also offers the most economical solution for any high-rise building or project with lots of repetition.

DDT Konstruct Inc is a service oriented organization, giving the utmost importance to client satisfaction by continually improving the means of delivering projects in the safest way possible, with the highest quality attainable, and at a reasonable cost.

Elematic offers Smart Evolution as a customer guarantee. This means improving operations and offering to develop the business of customers in a smart way, providing everything from a single precast machine to complete production plants, supplying the most advanced technology e.g. for seismic and hot and cold zones.

Excelling in their respective business areas, DDT Konstruct and Elematic are working together to develop precast construction in the Philippines.



Elematic sponsored the free download possibility of the pdf of this article for all readers of CPI. Please check the website www.cpi-worldwide.com/channels/elematic or scan the QR code with your smartphone to get direct access to this website.



FURTHER INFORMATION



Elematic
Airalantie 2
P.O. Box 33
37801 Akaa, Finland
T +358 3 549511
F +358 3 5495300
sales@elematic.com
www.elematic.com

Tie Wire TW897

www.primarebartools.com
primamachinery@gmail.com

- **Helps You Saving More**
- **Helps You Saving On Every Knot**
- **Fit Most Rebar Tying Machine**