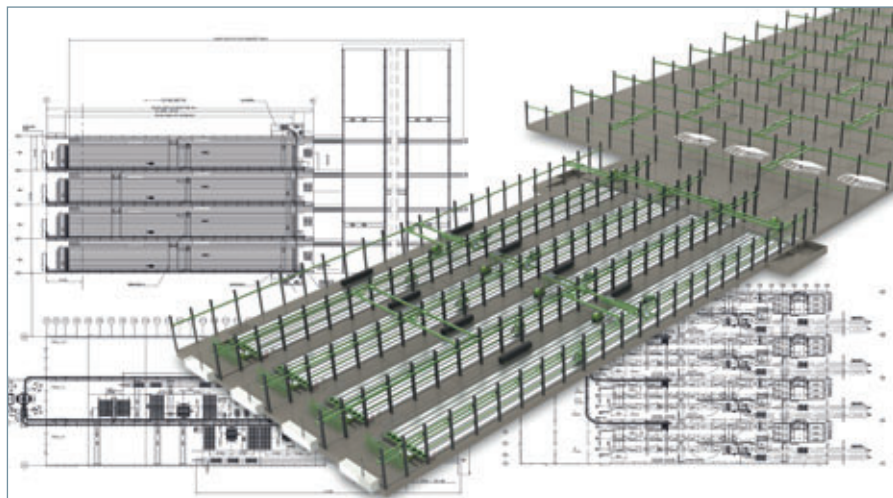


Elematic, 37801 Akaa, Finland

High-capacity precast plant will be delivered to Iraq

Elematic Oy Ab has signed a contract with South Korean Hanwha Engineering and Construction to deliver a high-capacity precast plant valued at nearly 40 million euros to Iraq. The total sum of the reconstruction agreement between Hanwha and the government of Iraq for building a new satellite city in the vicinity of Bagdad is over 5.9 billion euros.



The full precast plant in Bismayah consists of three buildings, one for hollow-core slab production (extruder lines), one for facade production (circulating lines) and one for other precast products (battery and potter molds) – all machinery by Elematic.

The infrastructure in Iraq is being modernized with speed and the country has numerous large construction projects underway. Only in the next five years, the country needs 2.5 million homes. One solution to meet these needs is the future city of Bismayah rising near Bagdad. The city will contain 100,000 mainly Islamic traditional houses and modern houses of 100, 120, and 140 square meters plus infrastructure

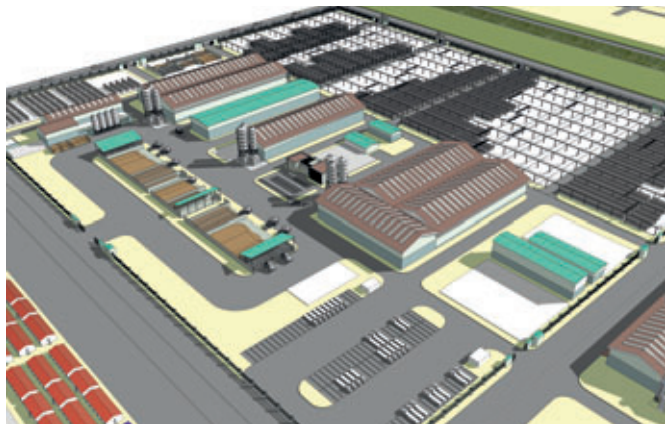
such as roads, water, and sewage facilities. Hanwha Engineering is part of the Hanwha Group's largest business conglomerate and the scale of the Iraqi housing complex is the largest-ever in the history of Korea's overseas reconstruction projects.

The Iraqi government will be in charge of the financing and house sales of the project. Hanwha E&C is responsible for designing and constructing the residential units

and the infrastructure. Elematic stands for a very important part of the project since the company is to deliver a precast concrete factory that will be the world's largest of its kind. The plant will produce precast products for a mighty 8000 housing square meters a day: hollow-core slabs 7400 m²/day, sandwich walls 380 pcs/day, solid walls and stairs 370 pcs/day, and foundation elements 50 pcs/day.

Knowing the region facilitates business

For Elematic, its share of the contract is also the far biggest the company has ever made. Says Ari Mellanen, Sales Director Asia at Elematic: "Elematic won the deal because we are known around the world as a strong and respected developer of precast technology. We have also been operating in both the Middle East and Korea for a long time now and have valuable knowledge of the area. A significant factor is also the cooperation in this case between Elematic and the largest structural consulting company in Finland, Finnmap Consulting Oy, who are designing the residential housing of Bismayah." Before making the final decision, Mellanen and representatives of Hanwha travelled around the Middle-East and Finland to view housing



Hanwha Bismayah Factory; Bird-eye-view



Bismayah City; Bird-eye-view

projects completed with the same modern precast technology now being delivered to Iraq. They soon concluded that this was the optimum solution, as it is the most industrialized way to produce large amounts of high quality hollow-core products quickly, while saving greatly in raw materials and labor.

Wall technology to keep the heat or cold out

Elematic, as a one-stop-supplier, can deliver a factory of this size. "The complete flooring is made with hollow-core, and this project is the first time sandwich-wall technology is being implemented in this part of the world. Elematic has extensive experience of this superior insulated wall technology, which is designed to keep out the cold in the winter and the heat during the summer", describes Mellanen.

Seven years to build a city

The speed of the project from now on is high since the entire plant should be completed in the summer of 2014. The total construction period of Bismayah is seven years. Elematic has already prepared for the project through both recruitment of new employees and expansion of production facilities at Finnish factories. The plant in Iraq will produce 20,000 apartment units per year. This means that every day, about 6000 tons of concrete will be required and the amount of employees will be some 1700 people. The project as a whole needs a staff of 26,000 and Hanhwa is planning to create a 120 house building base camp for them on 1,100,000 square meters of land. "The building of the city is estimated to take five years. For now, we are solely talking about the housing itself, but a city also needs schools, hospitals, sports stadiums and much more in the future. The cooperation with Hanwha has been both smooth and pleasant, and we are looking forward to completing this inspiring and challenging project in the same enthusiastic and professional spirit", Mellanen concludes.



Elematic sponsored the free download possibility of the pdf of this article for all readers of CPI. Please check the website www.cpi-worldwide.com/channels/elematic or scan the QR code with your smartphone to get direct access to this website.

FURTHER INFORMATION



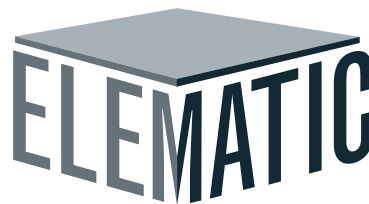
Elematic
Aiolantie 2, P.O. Box 33, 37801 Akaa, Finland
T +358 3 549511, F +358 3 5495300
sales@elematic.com, www.elematic.com



Hanwha E&C Corp.
Hanwha Bldg. 6F, #1 Janggyo-dong, Jung-gu, Seoul, Korea
www.hwenc.com



SUPPLYING
OPTIMIZED SOLUTIONS –
WORLDWIDE



SMART EVOLUTION