

Prinzing GmbH Anlagentechnik und Formenbau, 89143 Blaubeuren, Germany

New production plant for manhole elements in France

The Sarbeton company, based in Keskastel in France, is located on the border between the regions of Lothringen and Elsass. Sabeton is a well-known manufacturer of concrete products of the most diverse types. The product range includes ready-mix concrete, concrete pipes, manhole elements and special structures. For the manufacture of manhole elements, a decision has been taken in favour of a Tornado production plant made by the Prinzing company of Blaubeuren, Germany. This decision was taken by Mr Angermüller, President of Sabeton, on the basis of long-term experience values. Sabeton took over the Cilor company in 2002, which has owned a Prinzing Tornado since 1993.



The Sarbeton company in Keskastel, France



Feeding the steel pallets

Sabeton had precise ideas about how a production plant for the existing product range should look. The most powerful possible, flexible, space-saving plant was to be used for the production of manhole rings and cones. The Tornado by Prinzing meets

all of these requirements and can additionally offer very short setup times. Furthermore, physical work was to be facilitated and daily production increased by the use of handling systems.

The production plant

The sturdy Tornado production plant, made by Prinzing, was precisely what the Sabeton management, which places importance on great flexibility and proven tech-

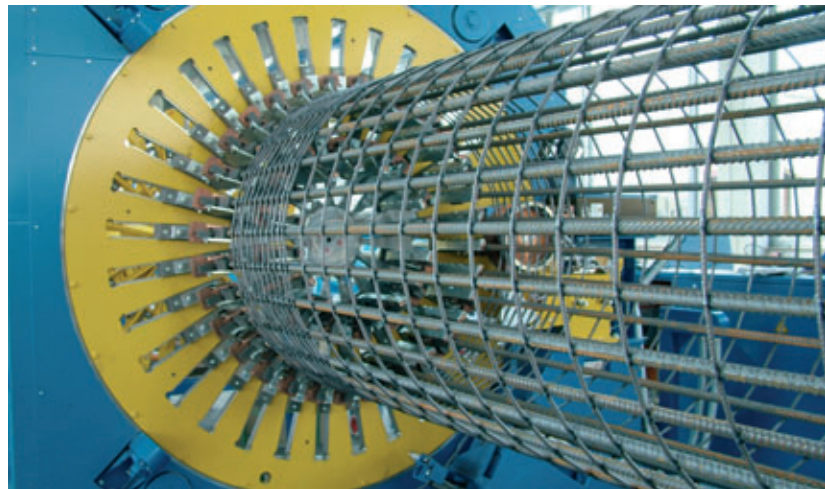
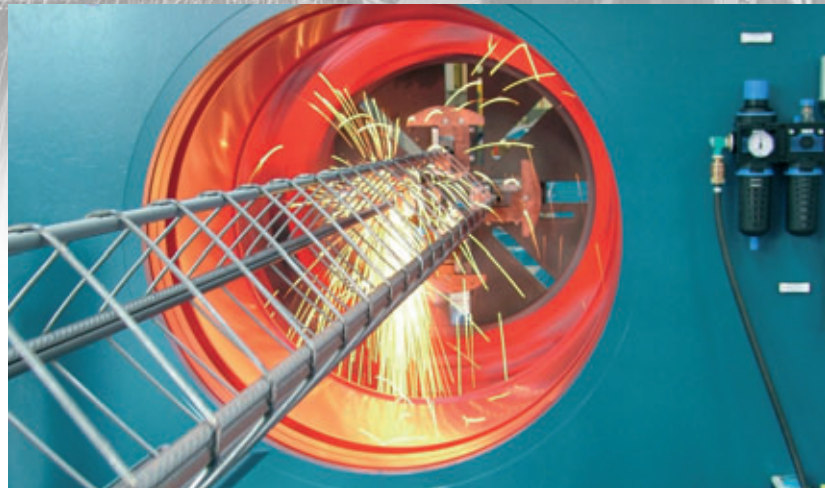


Filling up the manhole step magazine



Automatic insertion of transport anchors

”THE **RIGHT CHOICE** – **MBKEEN**”



Simply strong:

- Wire-Cage Machines
round - elliptical - egg-shaped
- Concrete pipe processing
Round - Oval - Egg-shaped -
Mouth shaped - Square - Meshes
- Quality assurance
measuring - testing - labelling
- Cage-handling
jointing - tipping - transporting

MBK Maschinenbau GmbH
Friedrich-List-Str. 19, 88353 Kisslegg, GERMANY
Tel.: +49/(0) 75 63 / 91 31-0 · Fax: +49/(0) 75 63 / 25 66
Internet: www.mbk-kisslegg.de · E-Mail: info@mbk-kisslegg.de





Electric cart



Tornado 150/150

nology, had in mind. The construction of the plant, which has been built for over 30 years on the same basic principle, convinced with its sturdy and open design. It is hence no problem to integrate handling components.

The following handling systems are in use at Sarbeton:

- Steel pallet stacking station
- Steel pallet cleaning
- Steel pallet oiling station
- Steel pallet inserter
- Anchor machine
- Manhole step magazine

The sequence begins with the delivery of a stack of steel pallets, which can be performed optionally by a fork lifter or an electric cart. These steel pallets are placed in the

stacking station, which then separates them. Further transport to the cleaning station is accomplished by a chain conveyor. The steel pallet is then cleansed of adhering concrete using scrapers and brushes. Following oiling with special formwork oil, the steel pallet is fed to the production position. Simultaneously, and without any loss of time, the manhole steps are transferred underground to the segment in the mould core. Similarly within the same time frame, two transport anchors are transferred automatically to the form jacket. Like the manhole steps, these will also be vibrated directly into the product later.

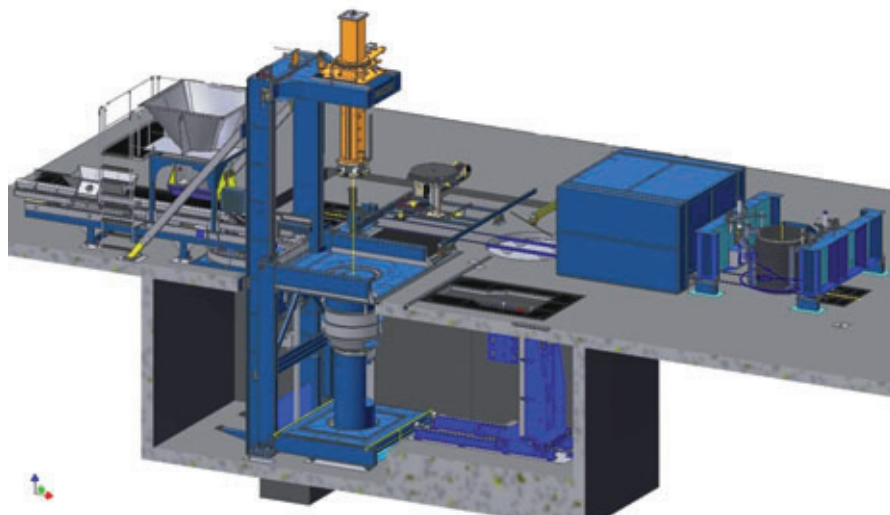
Hence, the only other thing that the machine operator has to do is to remove the elements using the electric transport cart.

The savings on costs and time and the significantly improved working conditions for the

machine operator were considered first and foremost in selecting the handling components. A very compact arrangement makes the plant tidy and operator-friendly.

Summary

The Tornado 150/150 (max. nominal width 1,500 mm and max. height 1,500 mm) meets the highest demands with regard to the quality of the concrete products. The automatic plant is structured very simply and is service and operator-friendly. Sarbeton is thus in a position to be able to adapt itself to the market and to offer its customers high quality manhole elements.



3-D display of the entire plant

FURTHER INFORMATION



PRINZING GmbH Anlagentechnik und Formenbau
Zum Weissen Jura 3
89143 Blaubeuren, Germany
T + 49 73 441720 · F + 49 73 4417280
info@prinz-ing-gmbh.de · www.prinz-ing-gmbh.de
www.top-werk.com



SARBETON
Route de Herbitzheim
67260 Keskastel, France
T +33 3 88001355 · F +33 3 88003558
sarbeton@wanadoo.fr · www.sarbeton.com